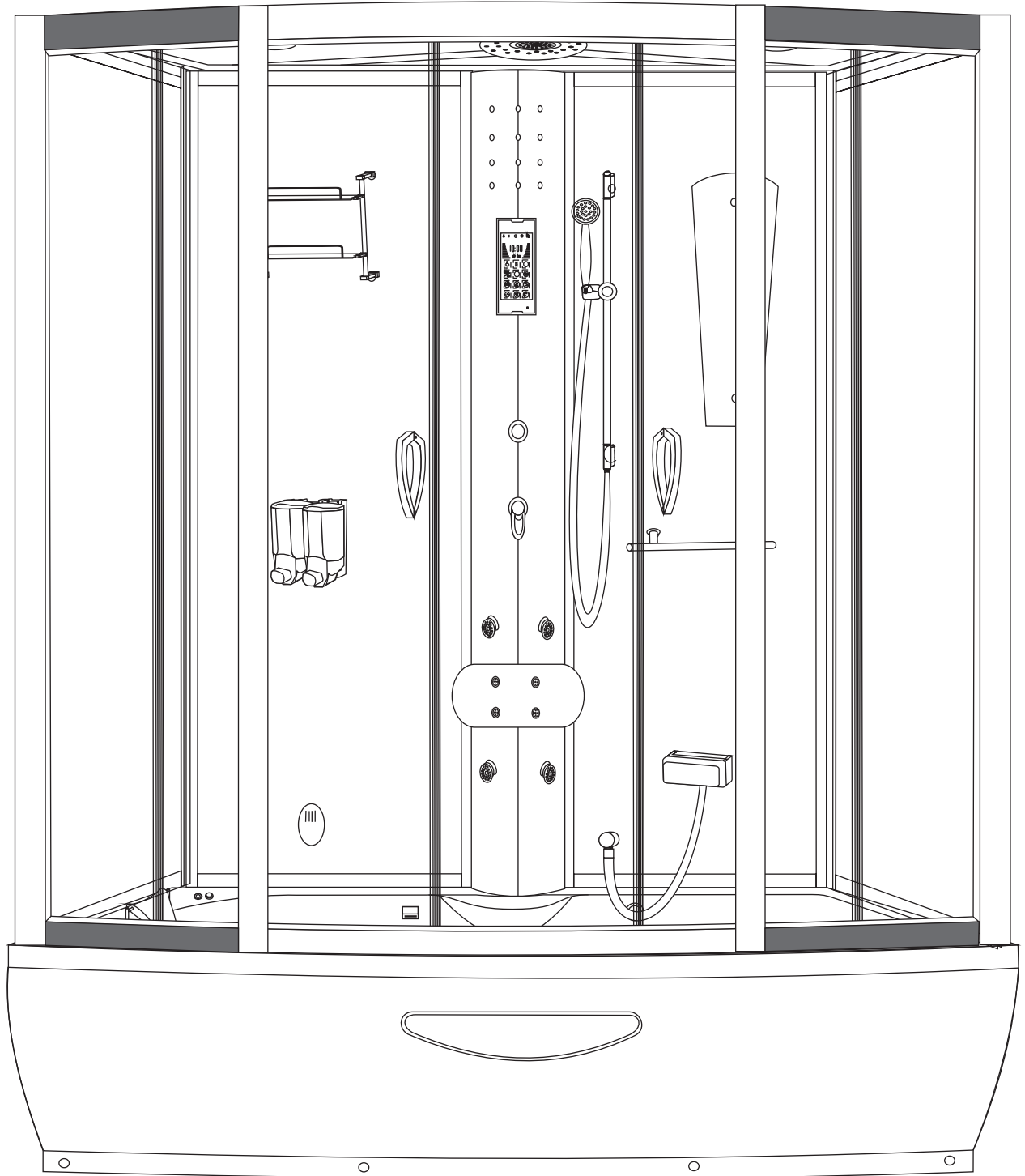


HX-8061

1650*800*2150



Shower Cabin Installation Guide

This unit must be installed by a qualified installer and in accordance with the local building, electrical and water authority guidelines. Follow the diagrams attached.

We suggest you read the entire guide before commencing installation, as you are doing this gather all the tools you are going to need so they are at hand. Before beginning to assemble this product, all parts should be removed from the packaging and inspected for any damage prior to installation as claims for damaged parts are not accepted once you have commenced assembly.

A scale reducer may be required in hard water areas. A pump will be required for low pressure installations such as gravity feeds – the operating pressure is between 1.5 and 3 bar. A pressure equalising valve will be required for un-even pressures as with combination boilers. This product is designed to work from equal hot and cold water pressures. To keep the glass clean and free from the buildup of scale we recommend the use of "ShowerGuard" – this must be applied to the glass before the first use. You can play music through the speakers in your shower cabin without wires when used in conjunction with the wireless iShower transmitter.

We recommend that a surge protector is fitted to protect the control panel and electrical box from power surges. A 20amp independent supply from the consumer unit is required. The RCD protected circuit must not exceed 30ma. A double pole ceiling switch of a suitable rating can be used to isolate the power when not in use. This appliance must be earthed. Power: rating 220-240v AC 2500-3800 W.

The recommended safe working temperature for any water fitting is no more than 45° c. If the pressure or temperature is exceeded then damage may occur. A pressure reducing valve may need to be used in high water pressure situations. Do not over tighten nuts or they could crack, and do not over tighten or twist the flexible connectors. Inspect all crimped connections for leaks prior to completing installation. Do not bend the flexible connectors to an angle exceeding 30 degrees to avoid build up of pressure and splitting. Do not expose to freezing temperatures. Pipe work must be flushed of debris before connecting. A mould resistant sanitary grade sealant must be used.

Important: When making any screwed connections PTFE tape must be used, ensure all the joints are fully tightened. Ensure correct seals are used where necessary. The waste should be connected to an inline running trap. Ensure that hose clips and pipes are secure on all whirlpool jets.

We strongly recommend installing particle filters and full bore lever isolation valves to both the hot and cold feed pipes in an accessible position. This will help to prevent premature failure of the valve and ease any future maintenance. You will require non-return valves to suit your water system to avoid back flow. Before connecting to the permanent water supply; shut off the mains water supply; switch off the water heating system, and open hot and cold taps at the lowest point in the building. Allow them to run until empty. This is very important to avoid any flux residues or other contaminants blocking the valve, or causing damage to the seals or the outlets.

You should leave adequate clearance for servicing purposes. This is a free standing unit and must not be built into any housing or installed in a fixed installation.

It is recommended that compression or push fit fittings are used to install this unit, as use of capillary fittings will invalidate any guarantee.

When the unit is not in use the supplies must be isolated. The unit must not be left on unattended. Care must be taken to ensure that the steam connection pipe is sealed properly – if steam escapes then it could cause the acrylic to lift away, craze or crack over time.

Any new pipe work should be checked for leaks. If any leaks occur they can mostly be stopped by simply tightening joints otherwise the system will have to be drained and a closer and more thorough investigation undertaken. If a high level of noise is experienced whilst using the shower mixer then there is a possibility of an air packet within the pipe work, or a kink in the flexible connectors / plastic pipe work. The usual cause of this is when water is trying to pass through a very small hole and causing a whistling effect, or there could be a problem of water hammer in which case a shock absorber should be fitted. This is a small mug sized vessel that's fitted to the pipe work and acts as a damper and reduces the problem of water hammer.

Before completing installation please ensure that you have checked for any signs of leaks and checked all functions are working correctly. On some models you will need to remove the pipe work cover to ensure that all factory fitted items, crimped and screwed connections are intact and that there is no damage to any pipe work.

We recommend adult supervision when this unit is used by the elderly / infirm or children. In steam models the steam outlet can become hot and should not be touched when the steam function is in use. The steam should not be used excessively. Shelves and storage racks are not designed to take heavy loading.

There is a 1 year parts only warranty with shower cabins provided that the installation guide has been followed, and professional installation has been carried out by qualified installers, and that the unit has been used in a normal domestic installation. Items sold as ex-display, refurbished, returns, auction sales, excess / overstock or ex-demo are usually with a 90 day warranty unless otherwise stated. Lights and seals are available as consumables and are not covered under the warranty. We will supply a replacement part free of charge in case of any manufacturing defect.

Only clean the surfaces with a soft cloth, warm water and a mild detergent solution, rinse the surfaces clean thoroughly afterwards with water. Do not use any abrasive or harsh chemical products as these will damage the finish of the surfaces and will invalidate any warranty. We do not cover any incidental / consequential loss, scratches, scuffs caused by wear and tear, improper installation, or accidental damage. We do not pay for re-installation costs. Separate insurance should be taken out to cover this. We do not employ field service engineers and we provide replacement parts only. No other warranties express or implied, are made, including merchantability or fitness for a particular purpose. Your statutory rights are not affected. E @ OE

Spare Parts & Service

Aftersales Department: 0844 884 9686
Spare parts: 0844 884 9556

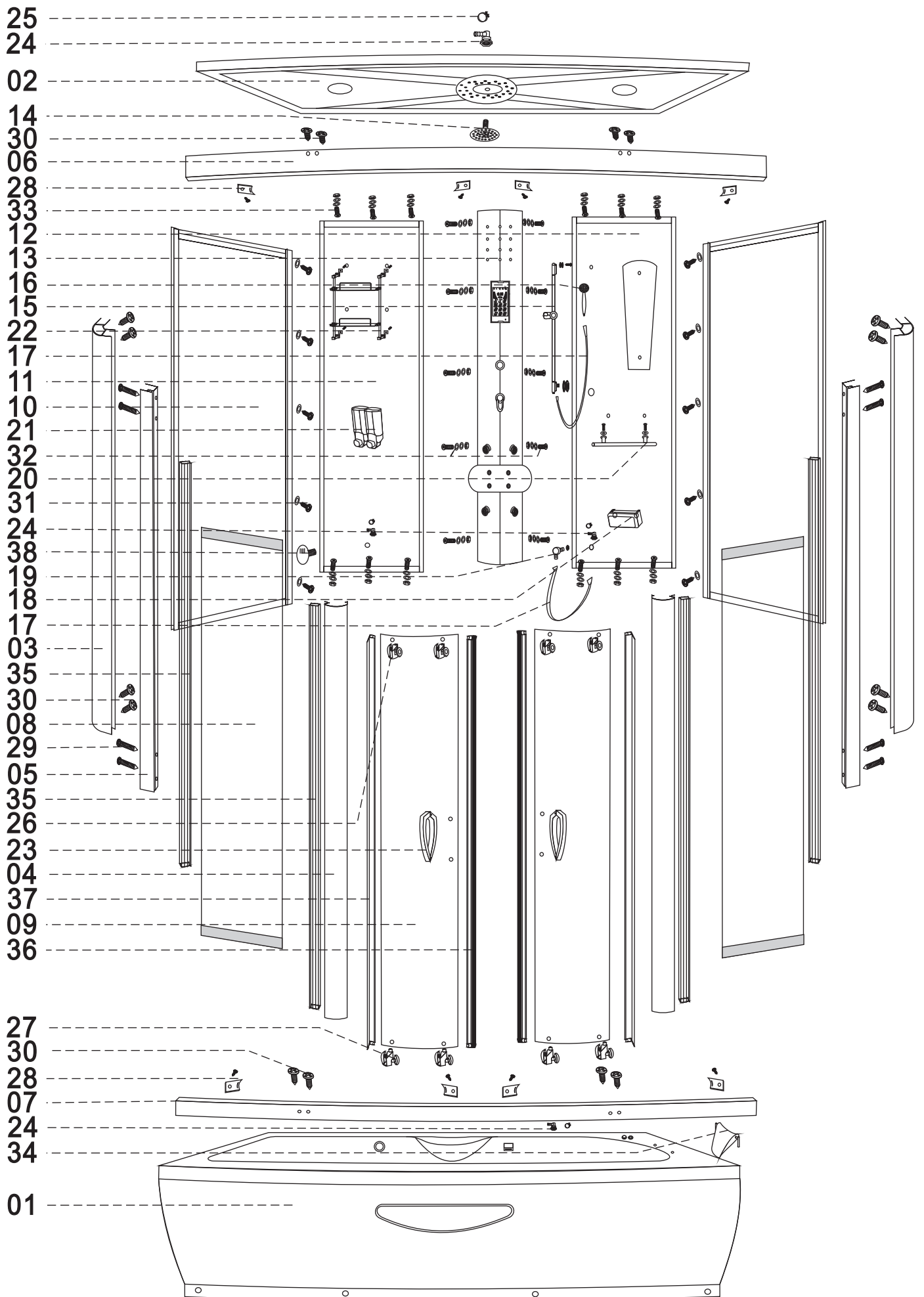
Technical Department: 0844 884 9680*
Fax: 0844 824 3145

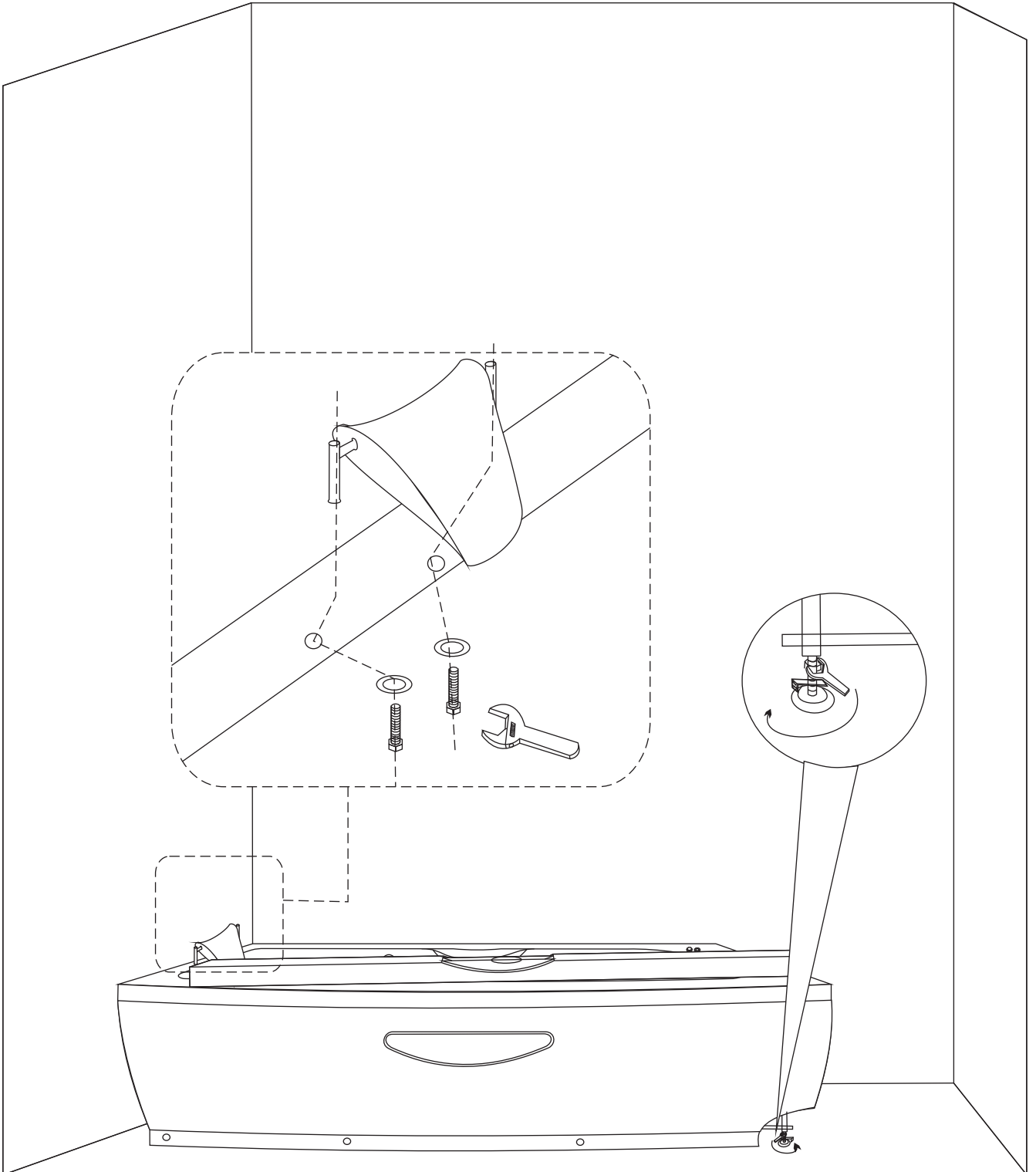
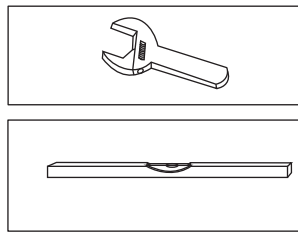
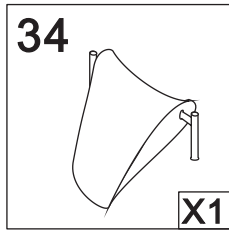
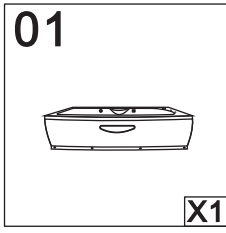
*Please note we can try to help but offer no guarantee or accept any liability from any advice we may offer, you are requested to qualify via an independent professional.

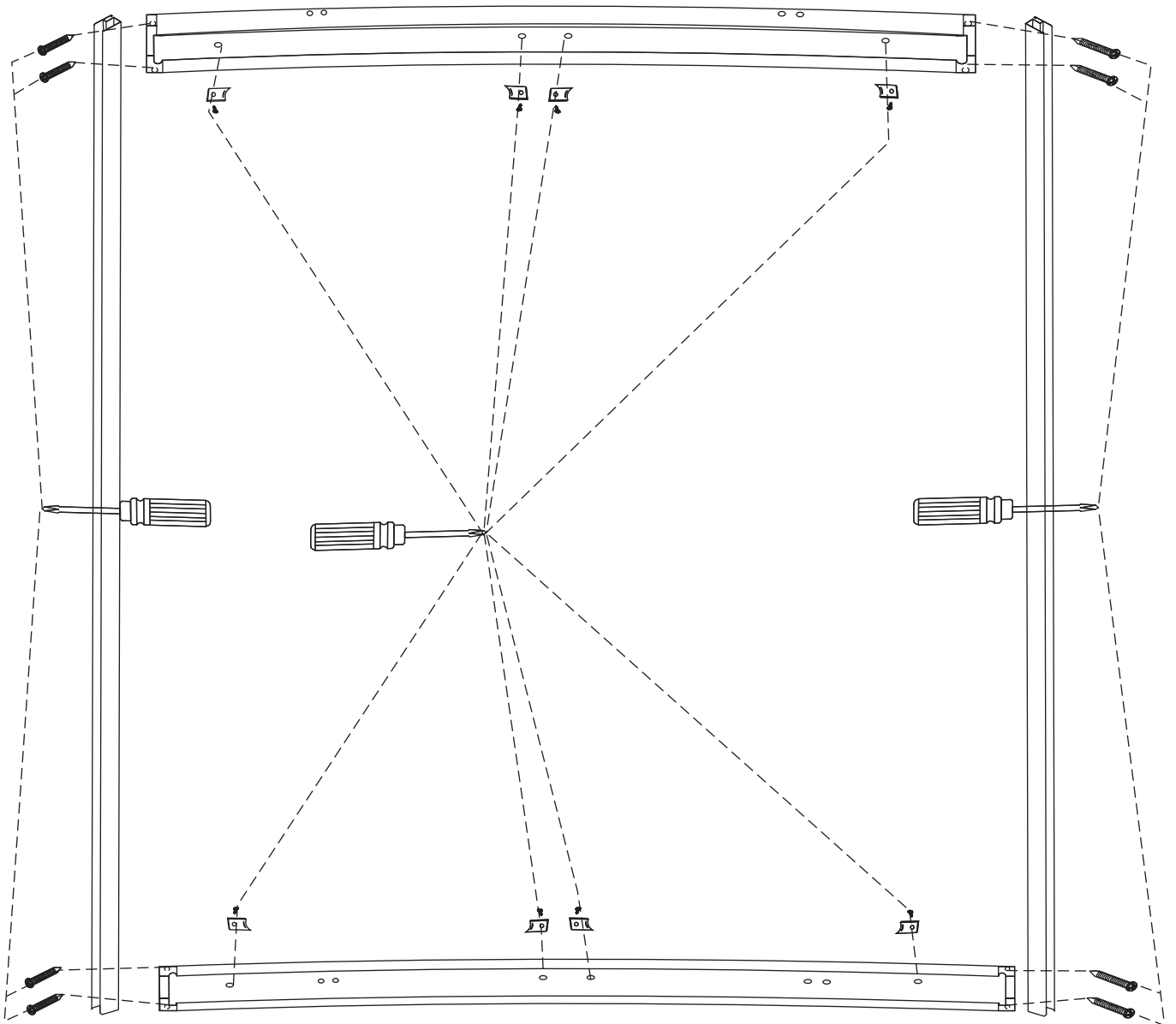
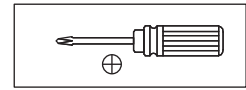
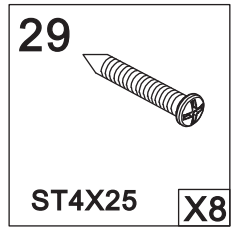
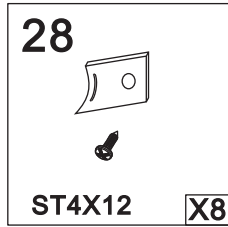
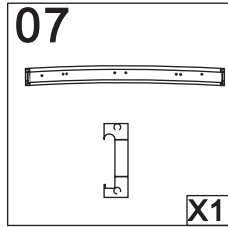
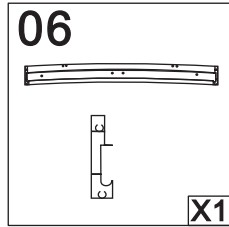
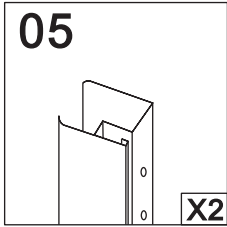
Web www.apd.name

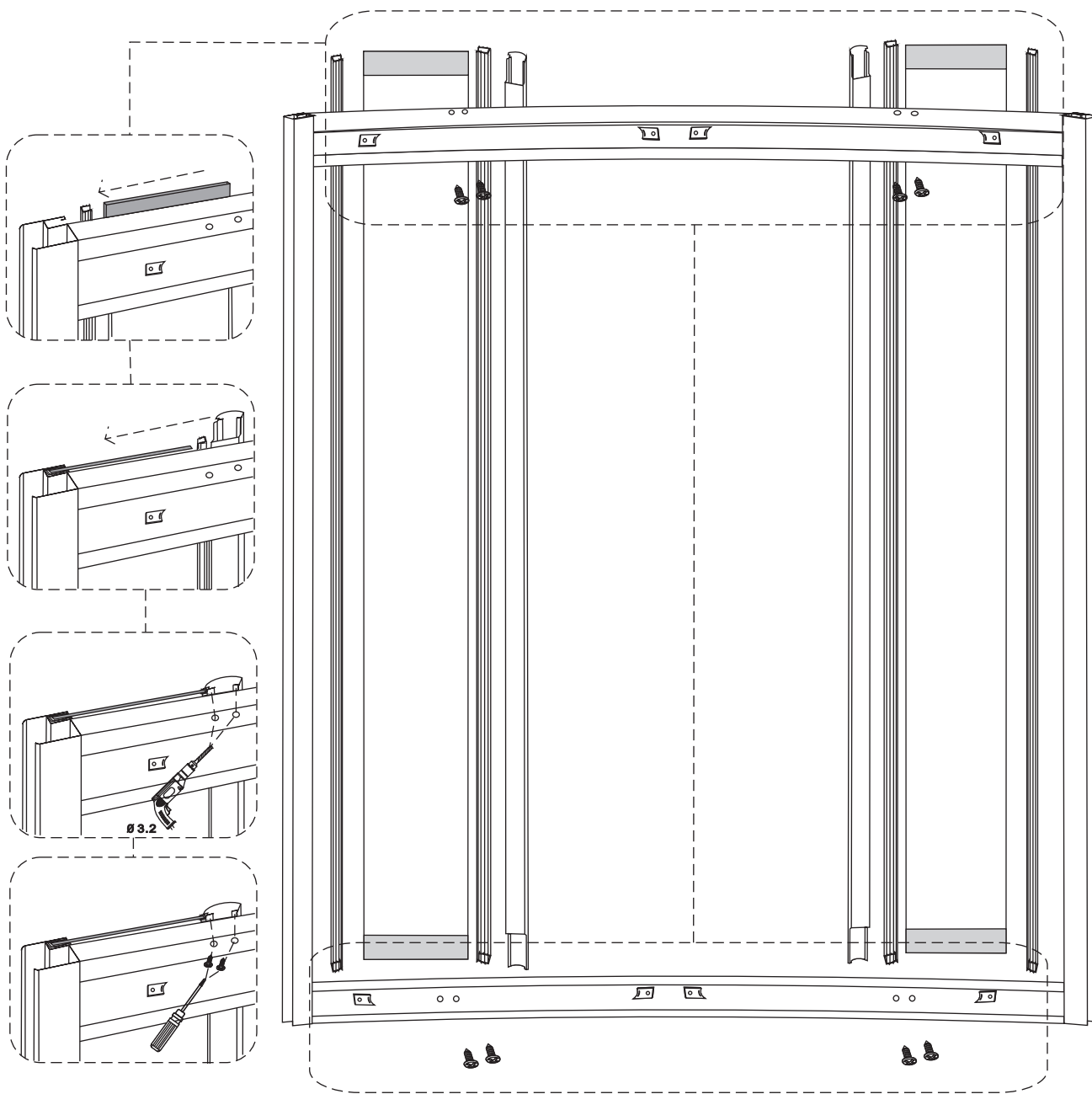
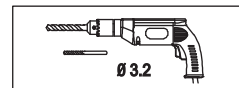
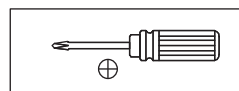
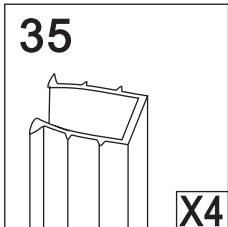
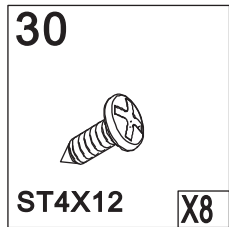
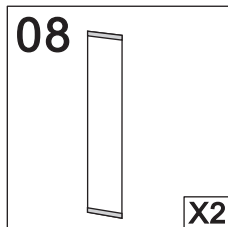
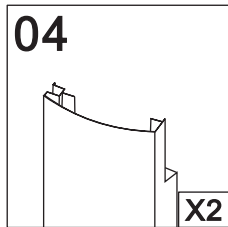
©2010 aquaplus distribution limited

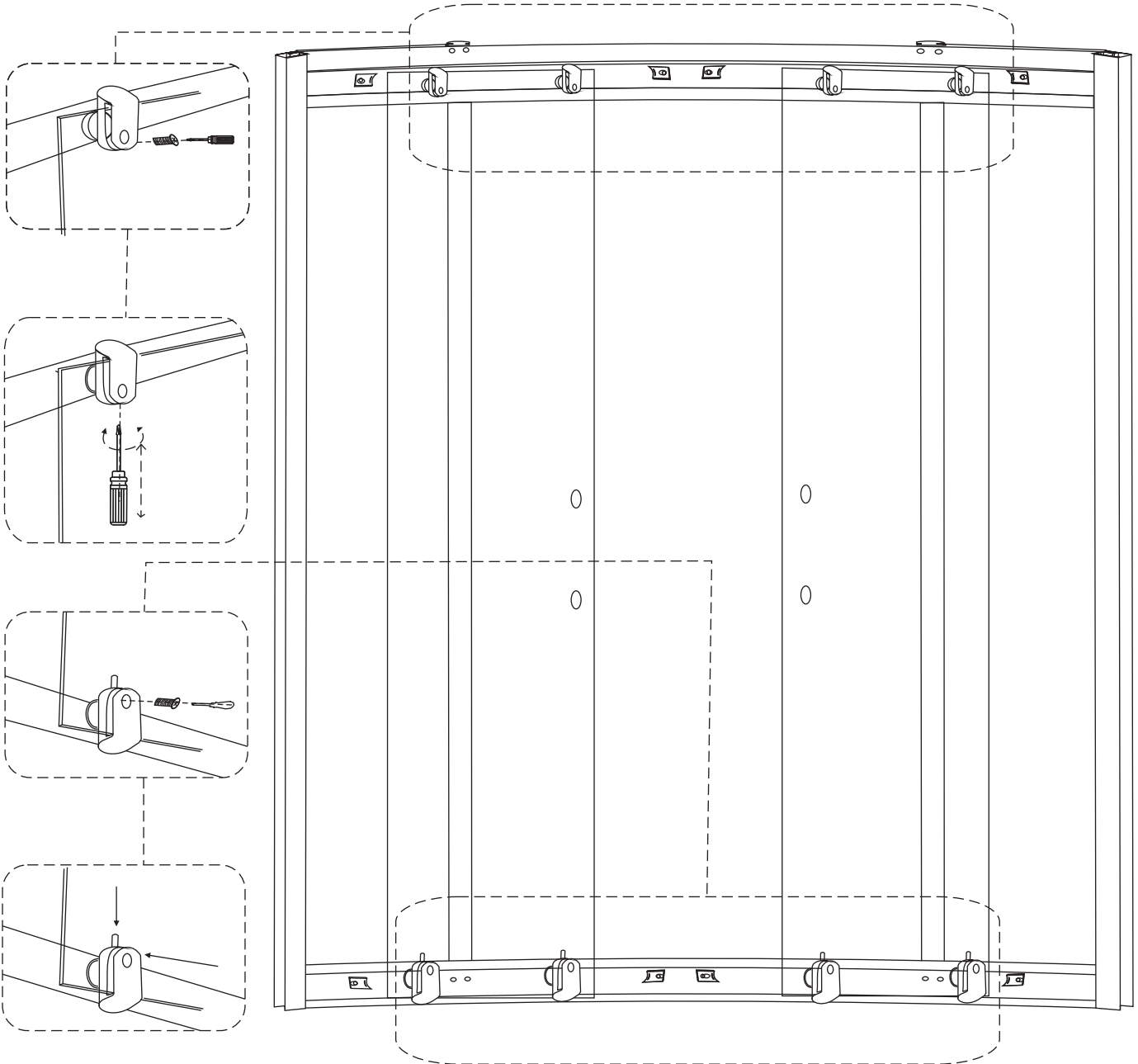
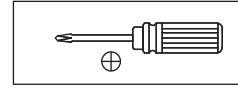
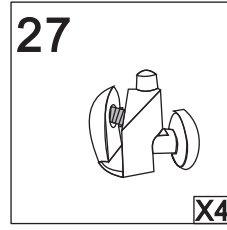
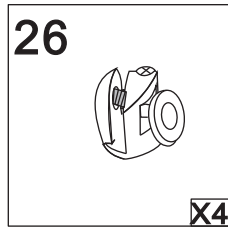
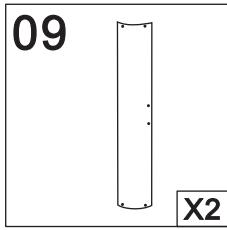


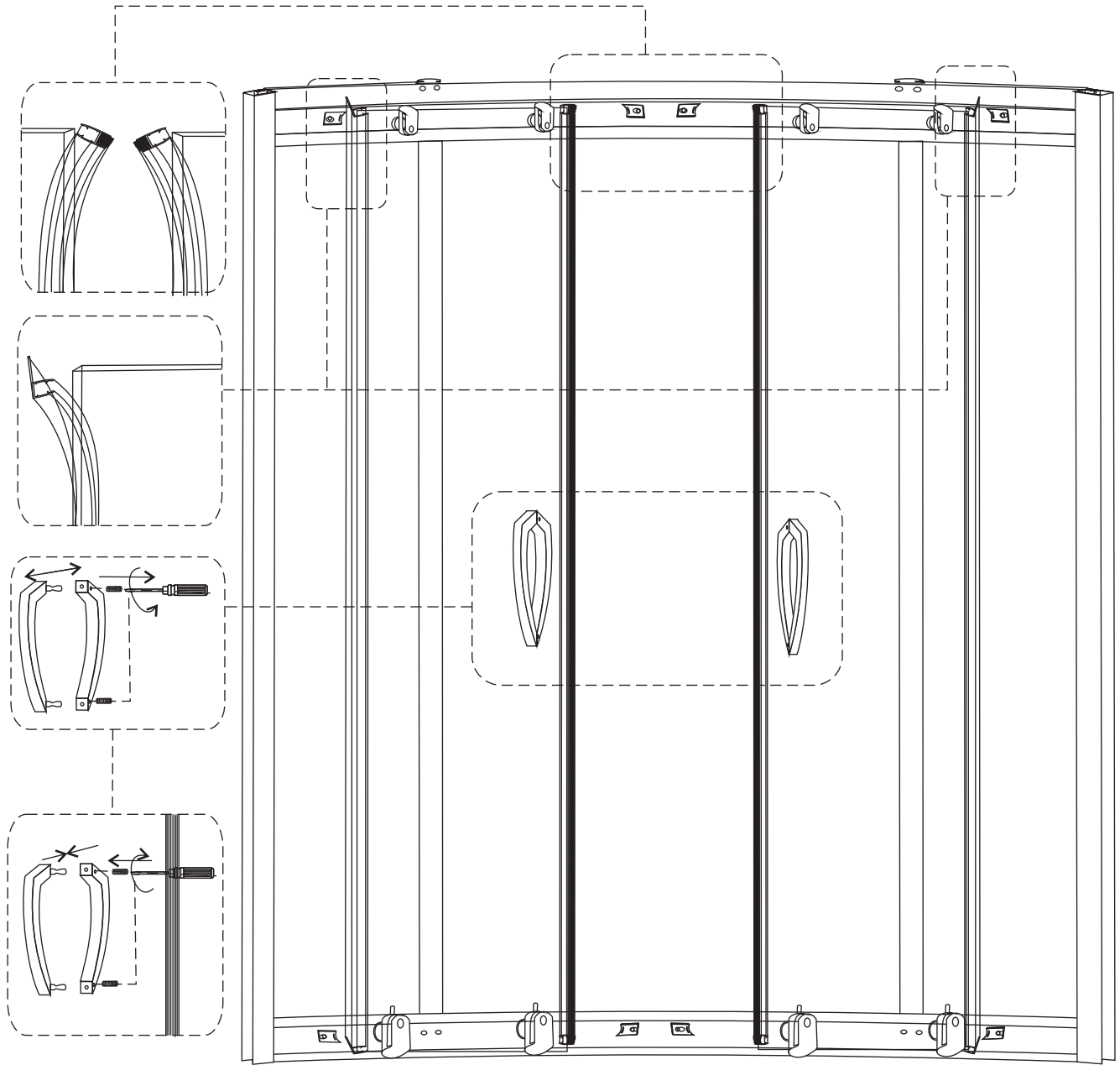
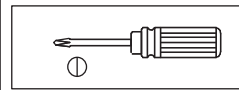
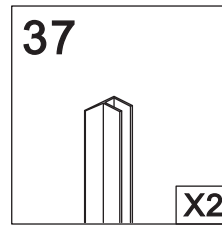
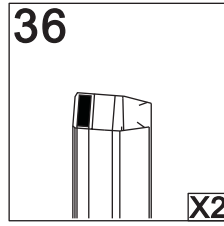
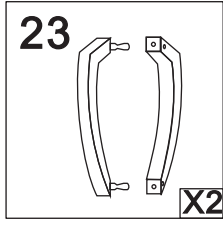


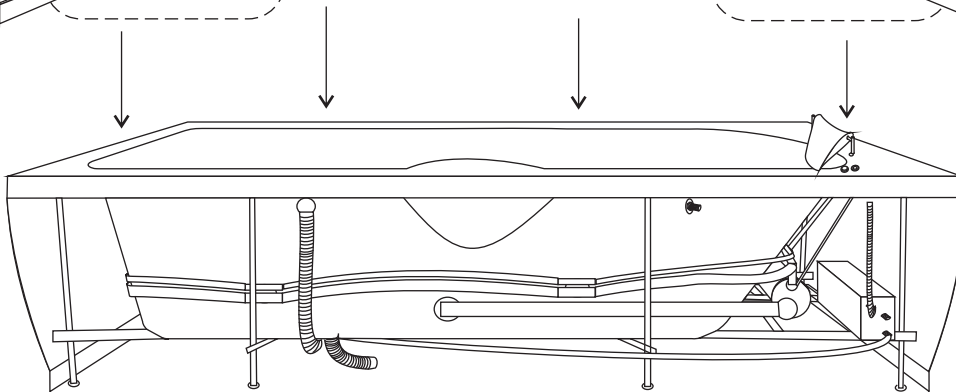
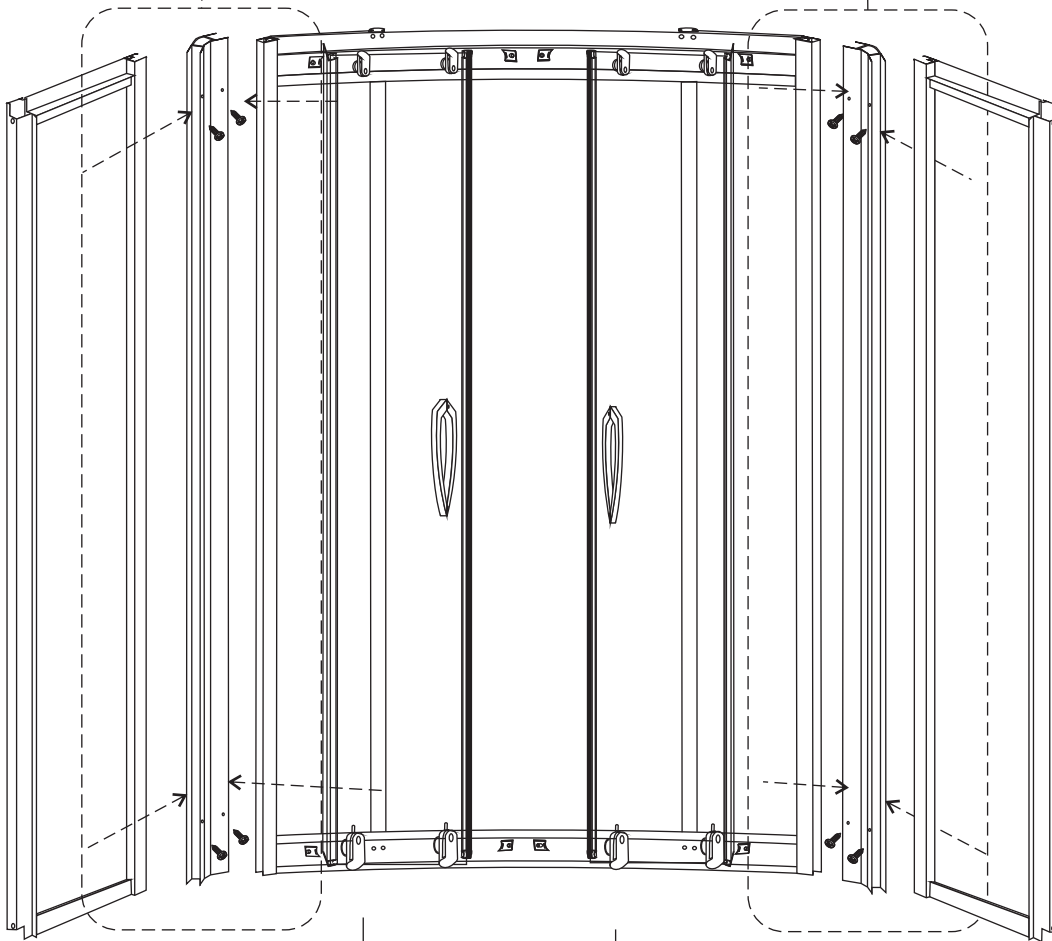
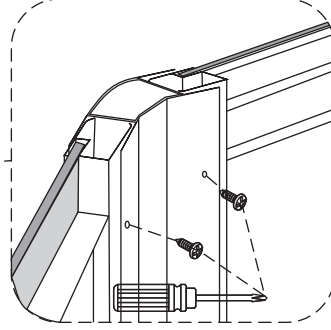
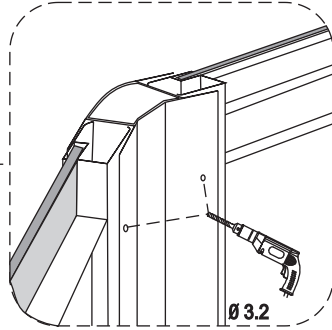
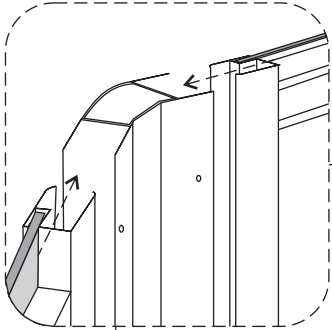
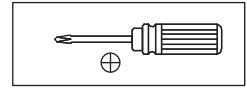
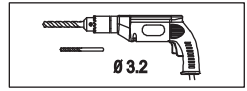
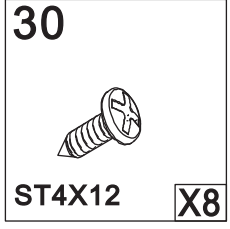
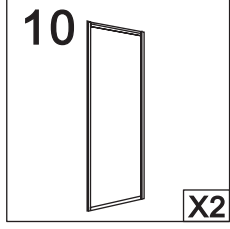
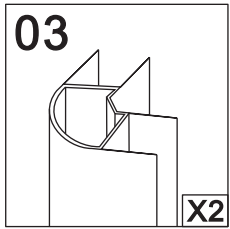




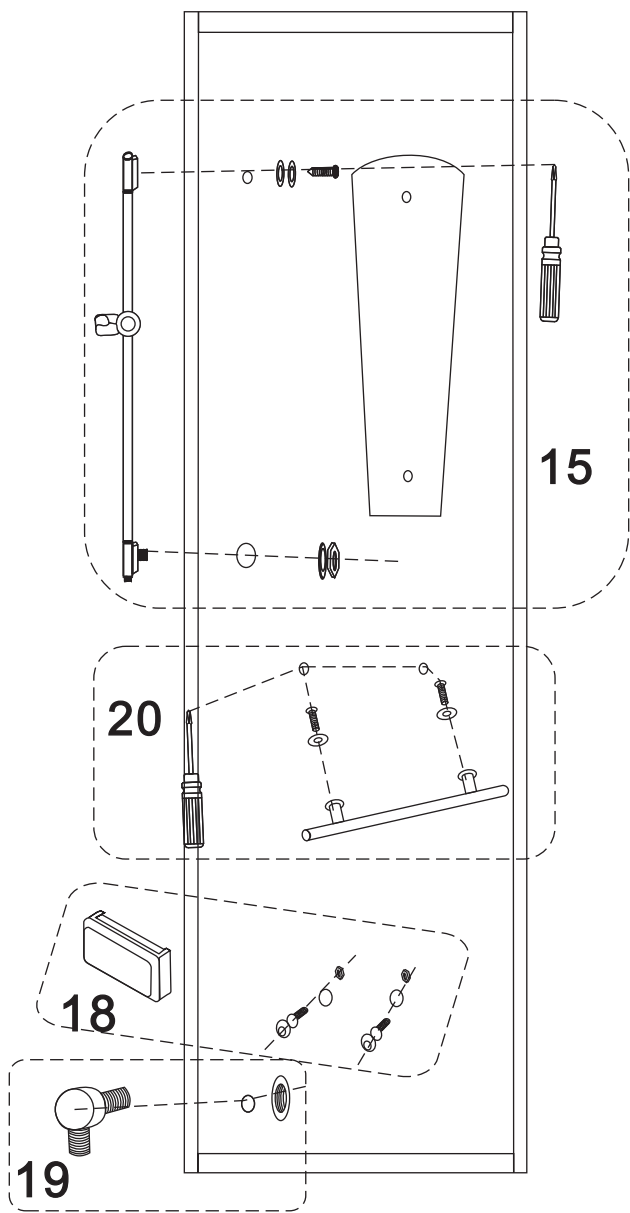
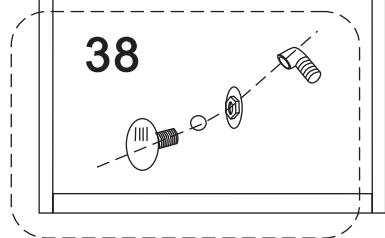
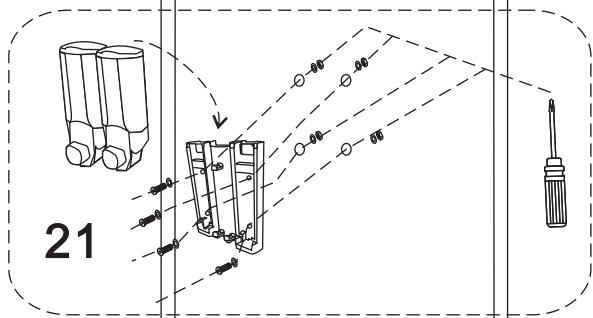
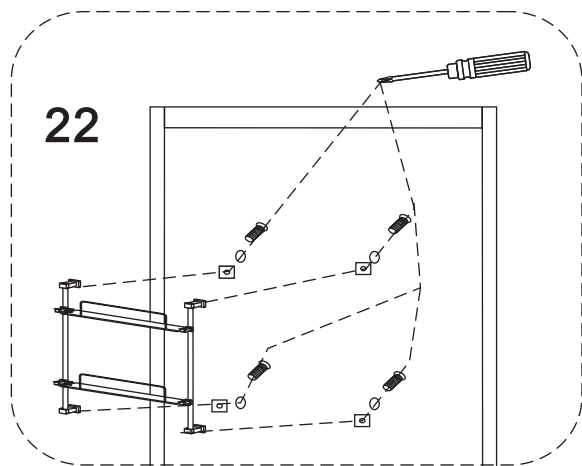
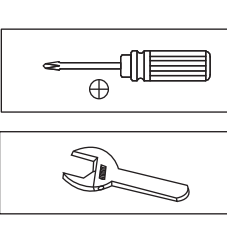
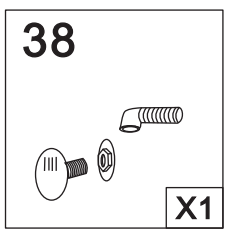
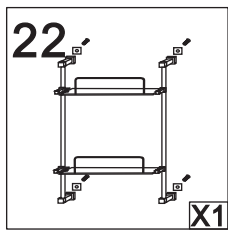
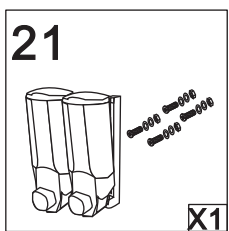
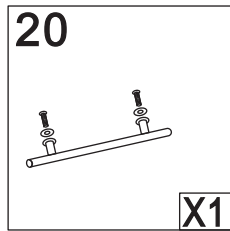
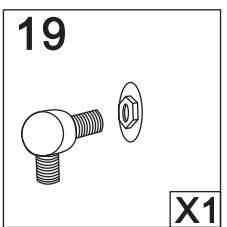
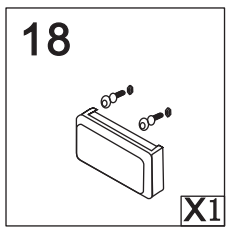
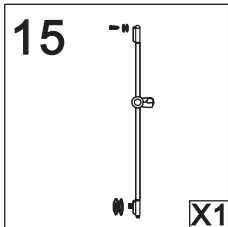
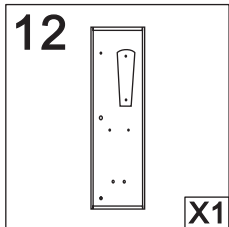
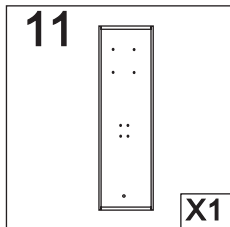




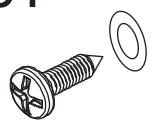




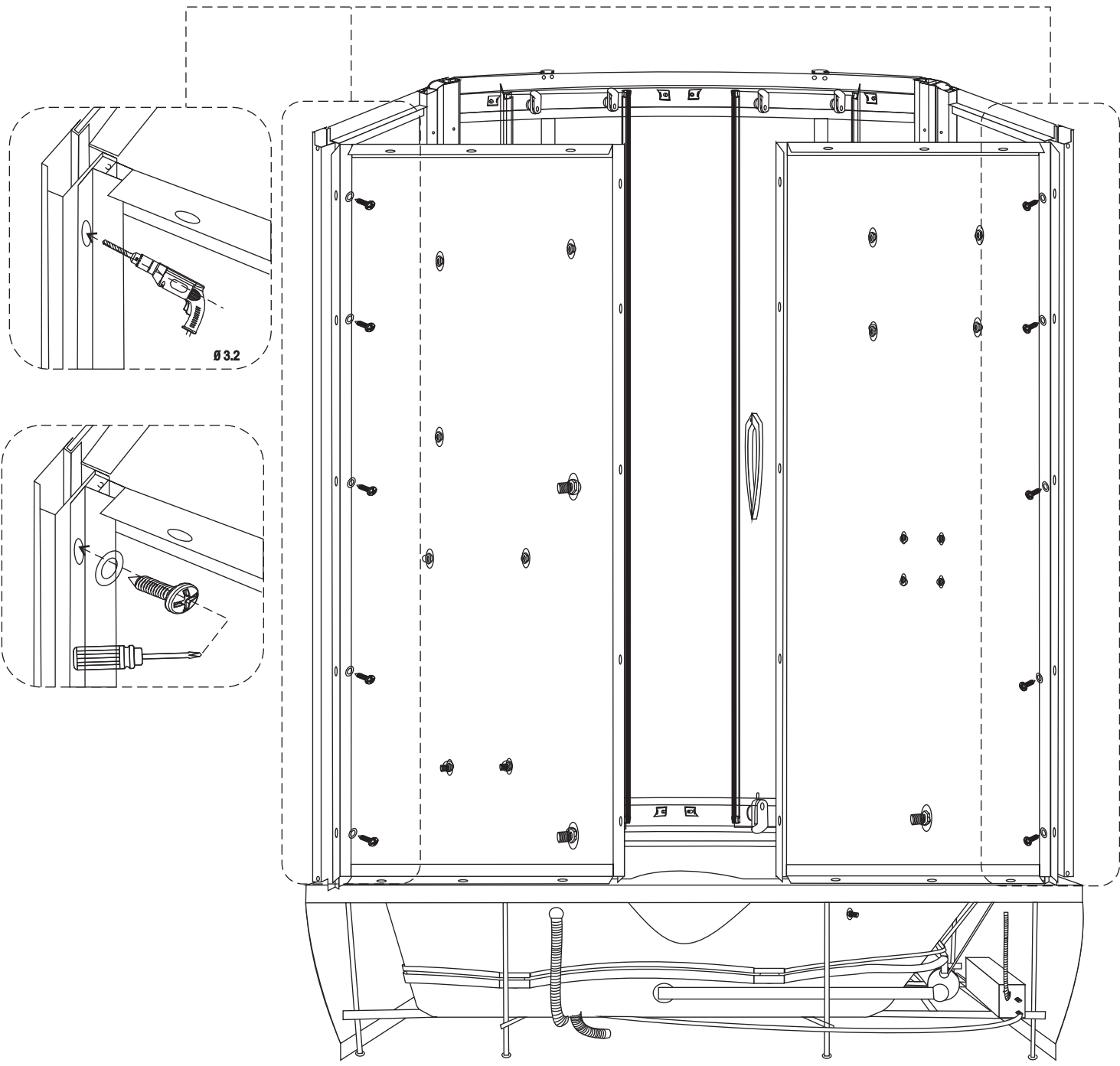
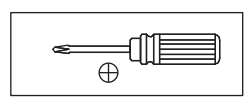
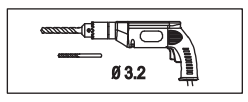
10

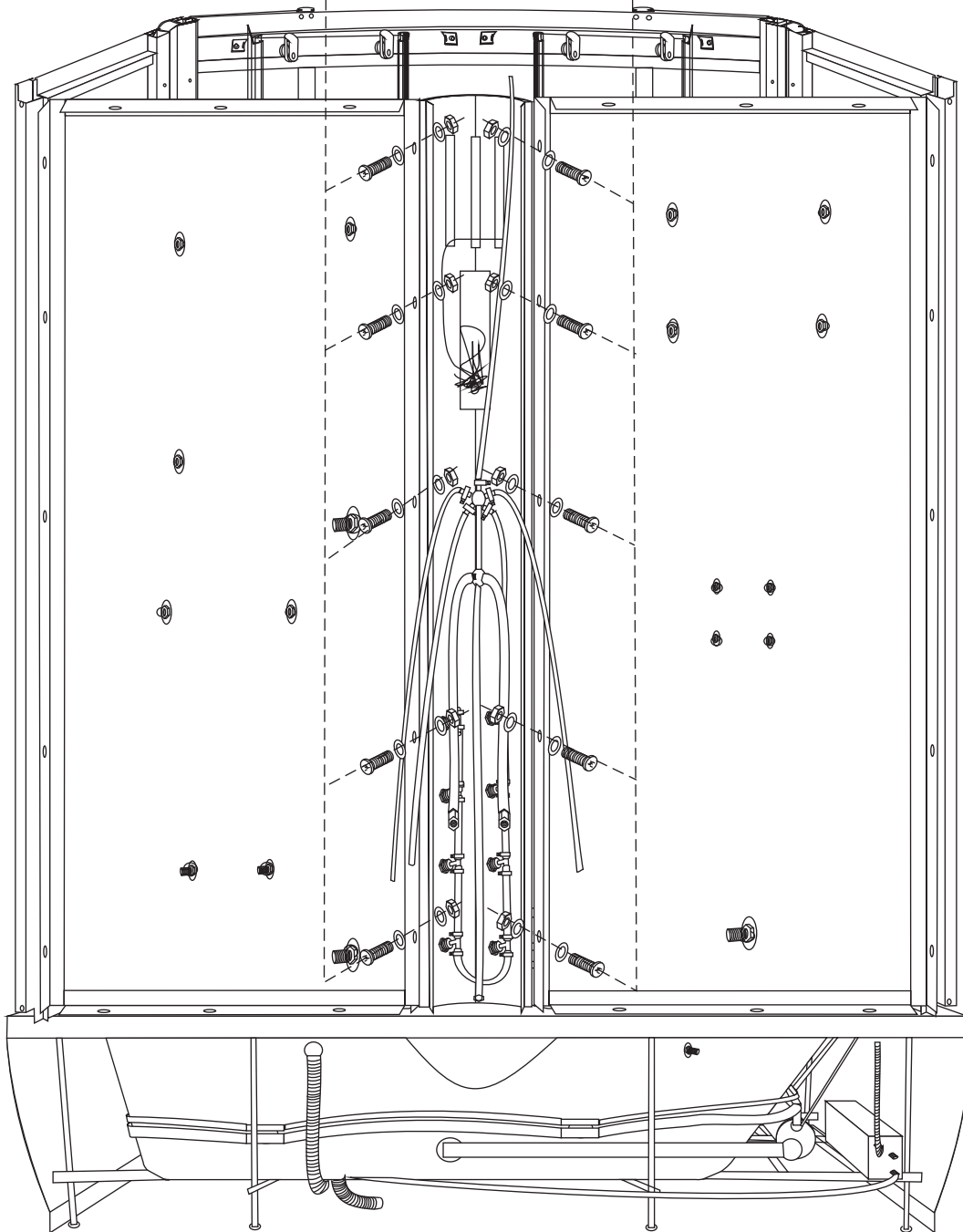
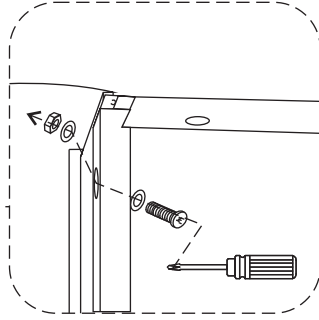
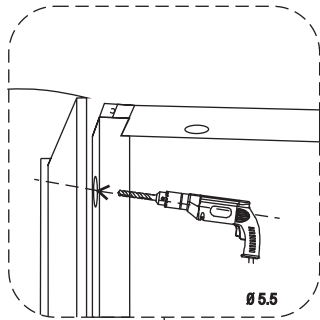
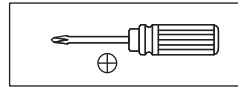
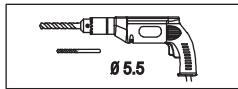
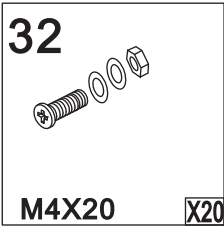
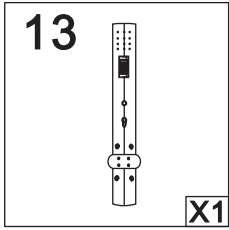


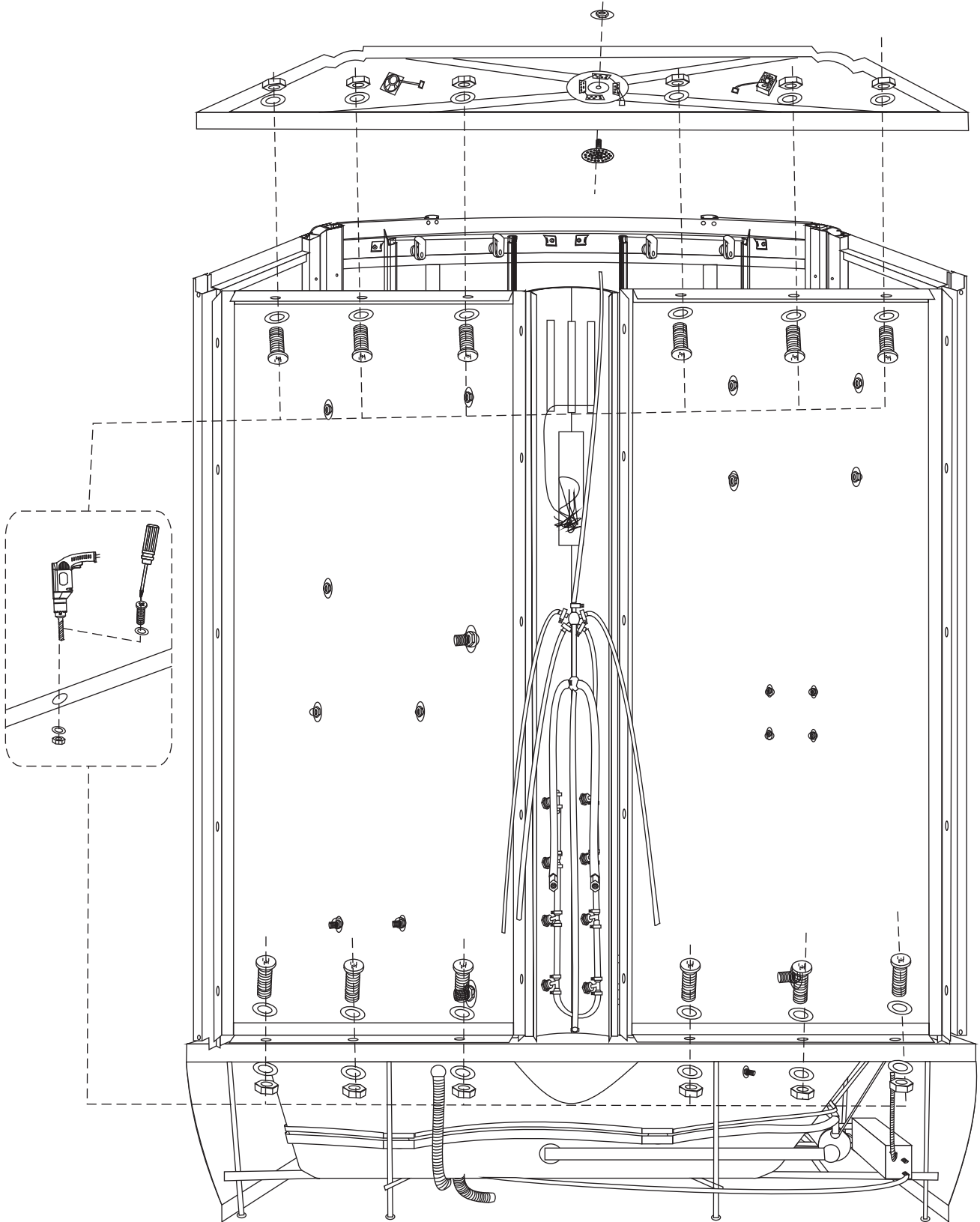
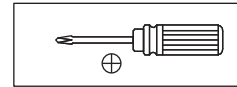
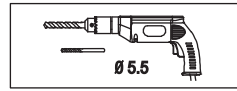
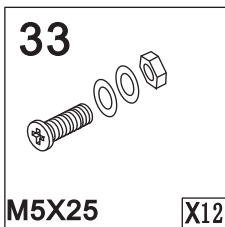
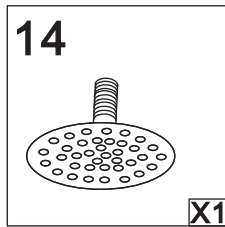
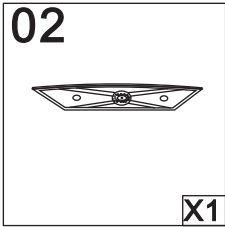
31

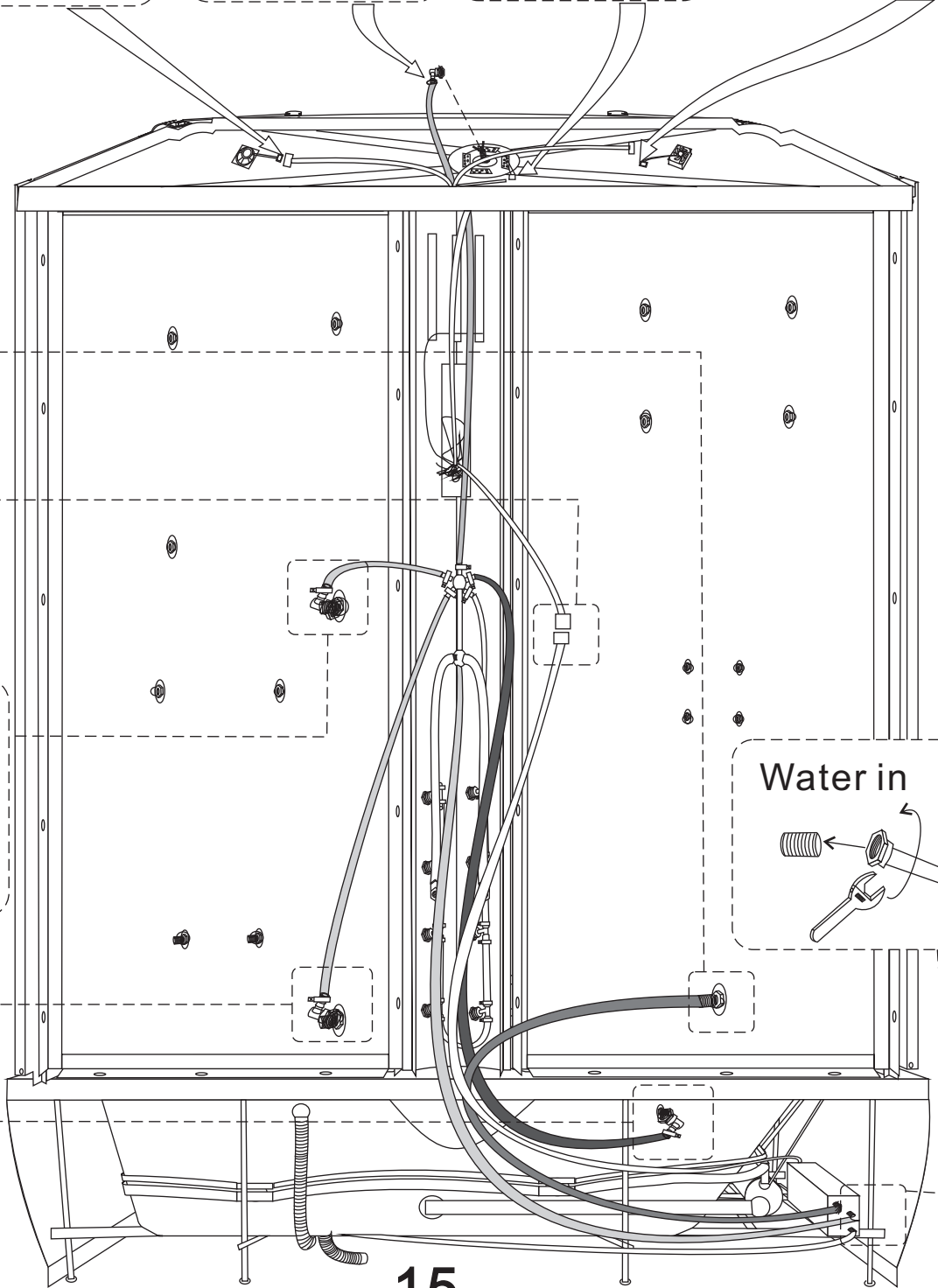
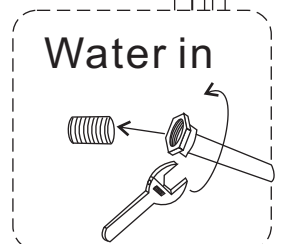
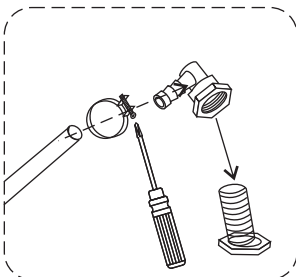
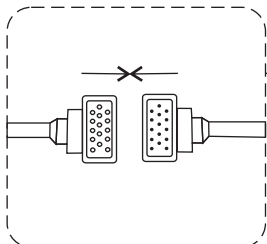
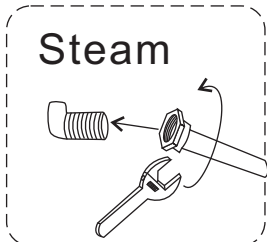
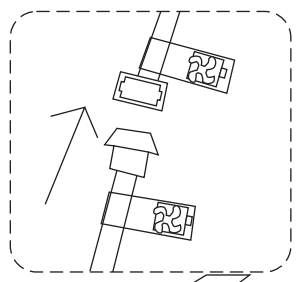
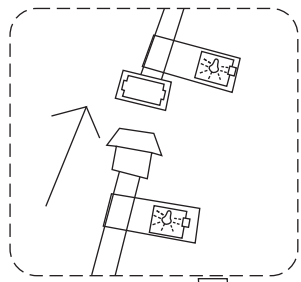
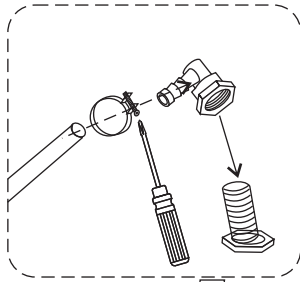
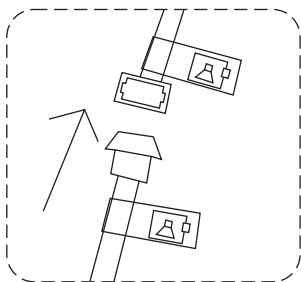
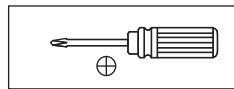
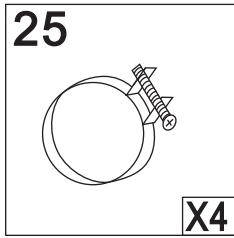
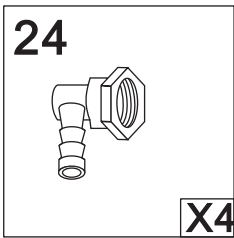


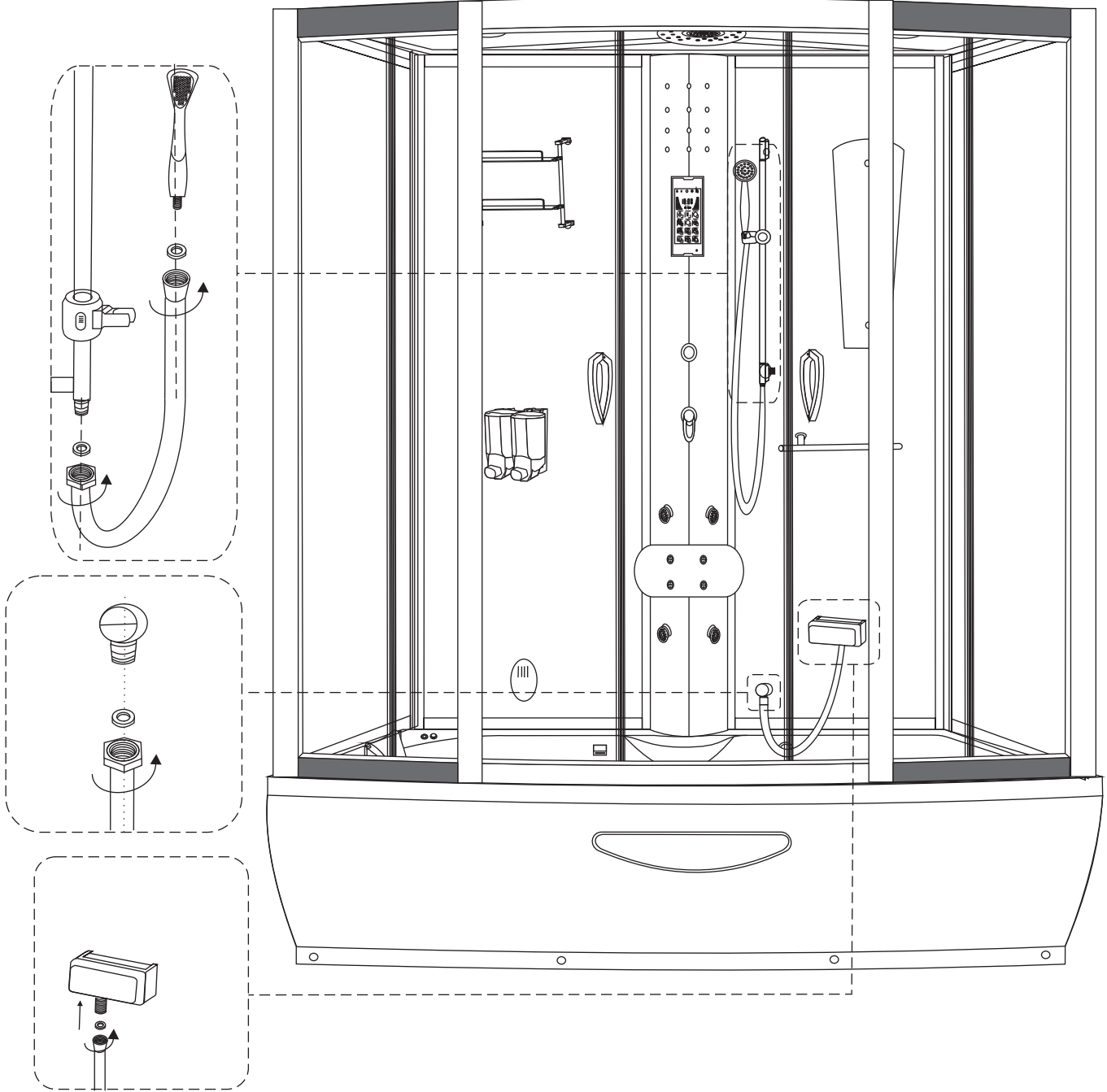
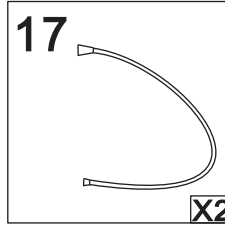
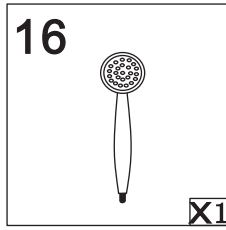
ST4X12 X10

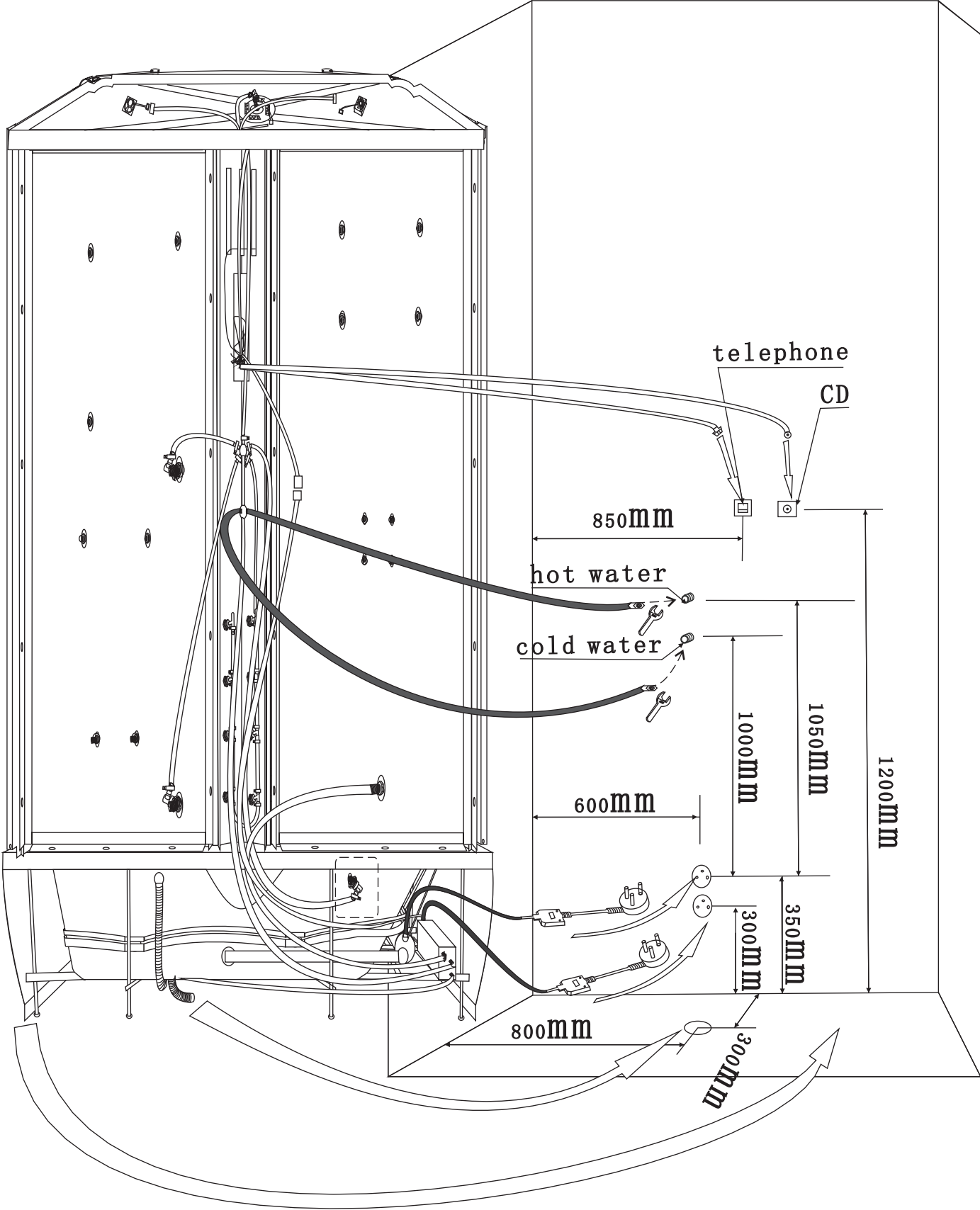
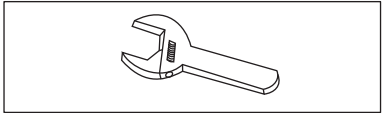
























-  Power
-  Top light
-  Background light
-  Fan
-  MP3\CD
-  Radio
-  Tel
-  Tune up
-  Reset
-  Volume Increase
-  Volume Decrease
-  Steam

