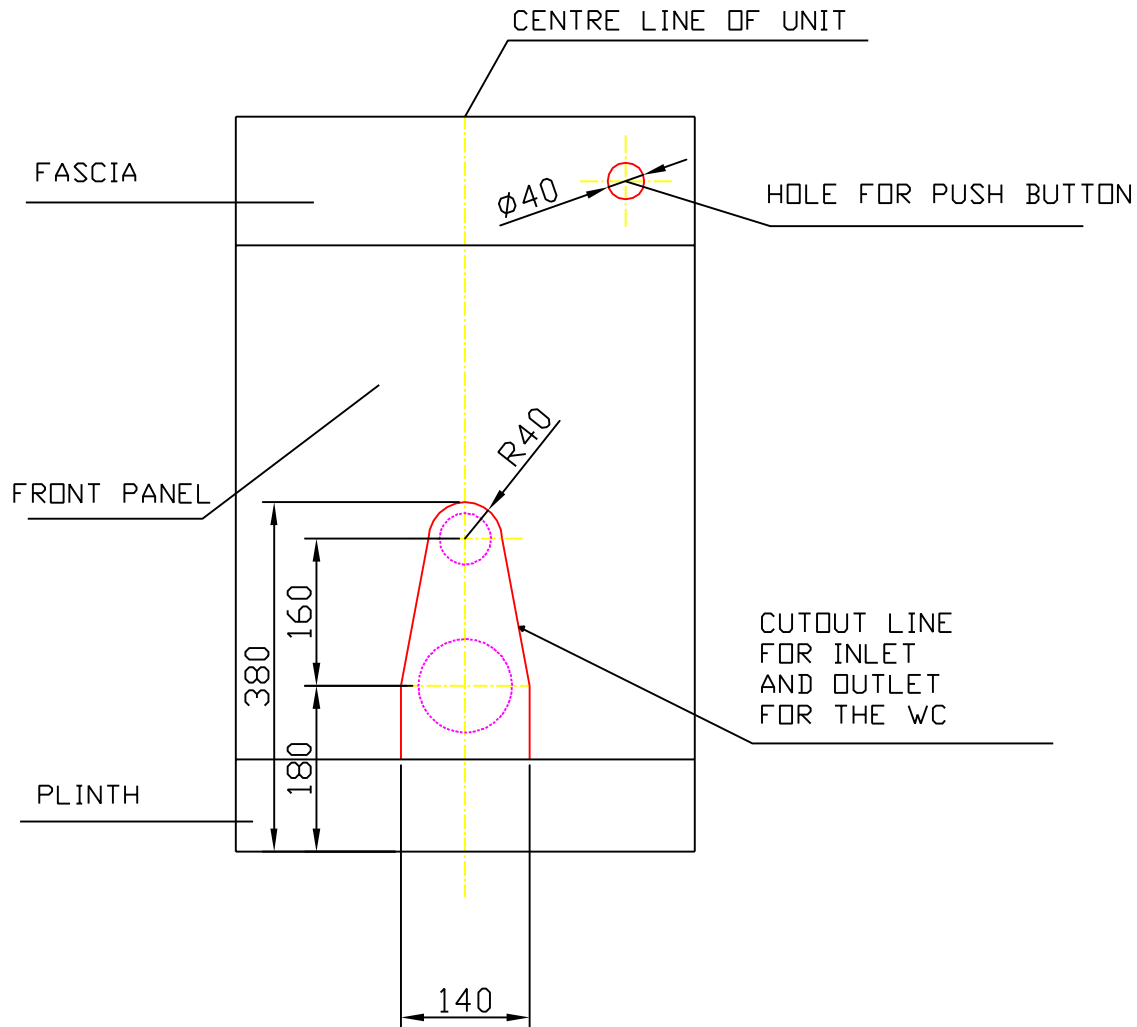


CUT OUT INSTRUCTIONS FOR W.C UNITS



MARK OUT THE OPENING ON THE FRONT PANEL FOR THE INLET AND OUTLETS OF THE WC PAN, BY FOLLOWING THE ABOVE DIMENSIONS, CHECK THE SIZE AGAINST THE PAN BEFORE CUTTING OUT. **DO NOT CUT THE BOTTOM PLINTH**

THE HOLE FOR THE PUSH BUTTON CAN BE POSITIONED ON THE FRONT FASCIA LEFT, RIGHT OR CENTRAL. THE DRAWING SHOWS A SUGGESTED POSITION, MARK THE CENTRE POINT FOR THE POSITION WHERE YOU WANT THE BUTTON AND DRILL A 40MM DIAMETER HOLE, FIX THE BUTTON INTO THE HOLE AND CONNECT THE CABLE TO THE BACK OF THE BUTTON ENSURING THAT THE CABLE IS NOT BENT OR KINKED.

ANY CUT SURFACES/EDGES MUST BE SEALED AGAINST WATER INGRESS.