

Installation Guide

Steam Shower Room

(9009 - 1200*900)



Packing List / Parts

This shower is packed into 4 cartons: Numbered as 1/4 glass room; 2/4 tub; 3/4 back board; 4/4 aluminum panel. You will find these parts in each package:

Box 1/4 package-glass room:



no.1



no.2



no.3



no.4



no.5



no.6



no.7



no.8



no.8.1&8.2&8.3

Box 2/4 package-tub:



no.9



no.10



no.11



no.12



no.13



no.14



no.15



no.16



no.17



no.18



no.19



no.20



no.21



no.22



no.23



no.24

Box 3/4 package-back board

Box 4/4 package-aluminum panel



no.25



no.26



no.27



no.28

Installation must only be carried by qualified installers.

Approx 9 litres per minute of each hot/cold are required to feed the unit. The supply pressure must be balanced and be between 1.5 and 3 bar. A pressure equalizing valve may be required for uneven pressures. These are free standing units when fully assembled. Adequate clearance should be left for future servicing purposes. Any shortages must be reported within 7 days of receipt.

Electrical & Pipe work

Fit 2 No. full bore lever valves for the hot & cold feeds, and a 40mm or 50mm waste outlet pipe with a reducer to 35mm, fit a IP56 rated electrical socket preferably on its own circuit.

Installation Steps

Step 1.



Place the bath on a solid floor and adjust the feet so that it is level. Check carefully using a spirit level. Remove film before installation.

Connecting the drainage pipe to the waste outlet. (We recommend you use a compression fitting to adapt to 40mm or 50mm solvent weld waste)

Step 2.

Installing the glass room frame. Take out 2 upright aluminum alloy columns (one with magnetic bar, the other one without) and the top and bottom black rails from Box 1/4 package.



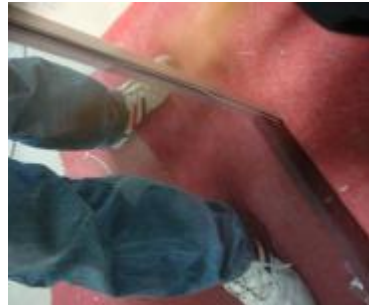
Connect them with the screws (part no.8.2). Make sure the side alloy columns are matched to the rails and are the correct way up.

Step.3

Installing fixed door and movable door. Locate 2 pieces of glass in Box 1/4, one is with holes, the other one is no holes.



Fit the plastic sealing strips (part no.4) to both sides of the fixed piece of glass (the 1 piece of glass without any holes). You may need to trim this down to make it fit, make sure it is no longer than the glass otherwise the glass will not fit.



Now insert the glass into the groove in the front frame against top and bottom front rails (place front frame on floor and keep it upright. Here, if you want the sliding door to open from the left, fit the fixed glass as picture, or you can make the front frame opposite way, top rail down). You may need to use a rubber mallet to make this and the small aluminum panel tight against fixed glass. Push the top rail by hand

slightly; ensure that the small panel goes inside against the top rail. Then fix it to the rails by screws (part no.8.3).



Step.4.



Take out the other 2 wide side aluminum curved panels; fit them into front glass frame. Fix them to the front frame by screws (part no.8.1).

Step.5.

Installing sliding door. Fit 2 rollers part no.2) into one side, fix the rollers tight, then lift the glass door into the top rail. Ensure that the rollers already hang inside before you tighten.



Take out the other 2 rollers, put them in bottom rail first, then fit them into the lower holes in the glass door. Fit the magnetic strip (part no.6) onto sliding glass door and adjust the rollers using spanner (part no.3) Fit the sealing strips (part no.5) onto the back of the glass doors, and

screw the covers on the runners.



Step.6.



Put the front frame onto tray; take the 2 pieces of the side panel glass, then insert into the curved aluminum panels. Fix the side glass and the front frame by screws (part no.8.2).

You see the finished glass cubicle.

Step.7.

Installing back boards. Take 2 pieces of glass back boards from Box 3/4. Put them on the tray; fix them by screws (part no.23).



Step.8.

Installing centre aluminum panel. Take out aluminum panel (part no.26) from Box 4/4, carry it through the front, place it between the 2 glass back boards, and adjust position as picture.



Step.9.

Installing top cover. Take out top cover and fix transformer and control box (part no.12) onto it as shown in the pictures, open up the wiring loom, and straighten the cables. Then place the top cover onto the cubicle, aligning from the back board side carefully.



Step.10.

Now using the screw pack (part no.24)

Adjust the top cover roof on the cubicle so that all the holes are in line and then screw the whole unit together.

(i.e. The holes in the tray will line up with the holes in the bottom of the back glass panels and the holes in the roof will line up with the holes in the top of the back glass panels.



Step.11.

Now fit door handle (part no.1) onto sliding door.



Fit the towel rail (part no.14&no.18), the shower riser rail (part no.19), and the hand held shower head (part no.21) and shower hose (part no.20). Fit grab rails (part no.28)



Attach shampoo dispenser (part no.27), the ball joint brackets (part no.10) for the foot massage and then sit the foot massage unit onto these, and chrome shower outlet elbow (part no.22), connect foot massage unit (part no.11) with connection (part no.16) using the shower hose (part no.9).

Step 12.

Connect the cables and wires according to the labels on each wire (i.e. fan, top light, O₃, radio, main control B).



There is 1 background lamp wire, which needs to be linked together, and then connect to the cable from the control box at the rear of the shower. Attach the notice label.

Step.13.

Connect the water pipes according to the labels, as top shower ,

handheld shower, foot massager. There are 2 pipes for the hot and cold water inlet, connect them as shown in Fig1.



Don't forget to connect the cold water pipe (from the centre panel) to the steam generator. And be sure tighten all of the pipe connections and check the jets are tight.

Step.14.



Seal all joints and corners using a mould resistant sanitary silicone sealant.

Finally! Water test to ensure there are no leaks, check operation of all the controls before sliding unit into place. Claims cannot be entertained unless this step is carried out.



Check the remote control (part no.13) to see if the battery has been fitted and then test all the functions. Before sliding the unit into place, ensure that you check all the joints for leaks but give the silicone time to set before you run all the water properly silicone can take a few hours to dry.



Please read steam generator operation manual (part no.17). Then, check the control panel if it works, and check all other components to see that they work, then you can push the unit into its desired place.

Operating guide

The elderly, infirm, disabled, expectant mothers, people with heart disorders, fitted pacemakers, blood pressure or other serious medical conditions should not use this unit without doctor's consent.

Any person under the influence of drugs, medication or intoxicated must not use this unit. Children should not use without adult supervision.

Please note that the steam outlet will get hot and should not be touched directly when in use. Aromatherapy oils may be used by placing into the steam outlet, but they should be watered down according to the manufacturer's instructions and never be used in the concentrated form.

It is advisable not to use the shower for more than 15-20 minutes.

Do not use the shelves, towel rails or sliding rails as supports and do not put items of excessive weight on them as they are designed to hold light objects only.

After use it is recommended the supplies are isolated from the unit.

Although the remote control is waterproof it should not be used under water!

Do not step out into the cold after taking a steam shower. It is advisable to drink plenty of fluids after taking a steam shower.

Care & cleaning

We do not recommend that you use any bath oils in your whirlpool system as this could cause damage to the jets.

Do not pour acid, grout, plaster, cement or debris into the drain as these will cause blockage to the waste, it could cause damage and the waste water may not drain away.

The surface area must only be cleaned using a damp cloth. For stubborn dirt, solvent & alcohol free cleaners must be used only in moderation.

Never use abrasives as this will attack the high quality surfaces. It is recommended that after each use you rinse down using the hand shower. If aromatherapy oils are used then the container should be cleaned out. The doors should be left open for the unit to dry.

A separate extraction fan should be fitted in the room where the shower is installed.

The supplies should be isolated after use. Things such as radio / lights should not be left on for prolonged periods as they could cause damage to the unit. Consumables such as bulbs, LEDs etc can be purchased from our spare parts department.

Warranty

We offer a 12 month (from purchase date) warranty on any part against manufacturing defects. Our warranty covers parts only. It does not cover labour, consequential loss,

courier costs, discolouration, pooling, or hairline cracks. Also not covered is damage due to incorrect installation, wear and tear, malicious damage, incorrect electrical or water supply, parts which have a limited lifetime such as but not limited to lamps and bulbs. We advise separate insurance to be taken out for this. As we are a supply only company we do not employ field service engineers but we do offer technical support by email or phone. Our maximum liability shall not exceed the price paid for the product. In case of any part becoming defective within the first 12 months of purchase, please send the defective part back to us at the address below, along with all copies of your proof of purchase and the original installer invoice and we will gladly replace the part for you.

Outside this period we will supply you any parts you may require, please call for cost. We recommend that you only use the manufacturer's original parts for any repairs and these are only carried out by qualified persons.

Recycling

To comply with the future regulations this unit must be disposed of according to the local authority requirements.

Technical Spec

Water supply 1.5 to 4 Bar BALANCED SUPPLY via full bore valves

Input Voltage: 220-240 $\pm 10\%$ 13 amp RCD circuits IP56 Water proof sockets may be required

Steam Generator: 3000 Watts

When calling please ensure that you have your invoice number to hand.

Addition 1.

Instructions for replacement of thermostatic core

BEFORE STARTING ENSURE THAT THE WATER&ELECTRICAL SUPPLIES ARE DISCONNECTED

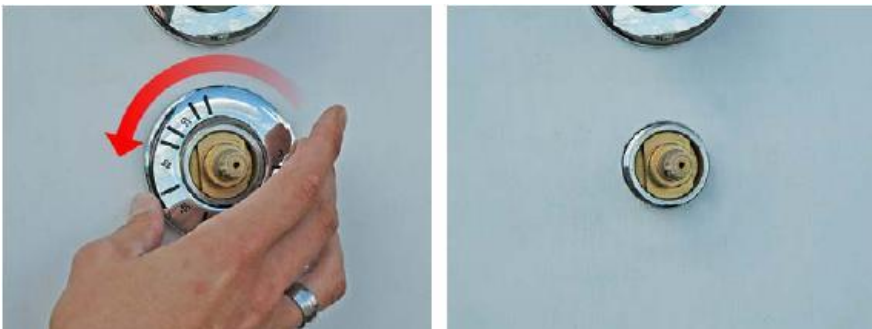
1. Remove the temperature selector control knob.



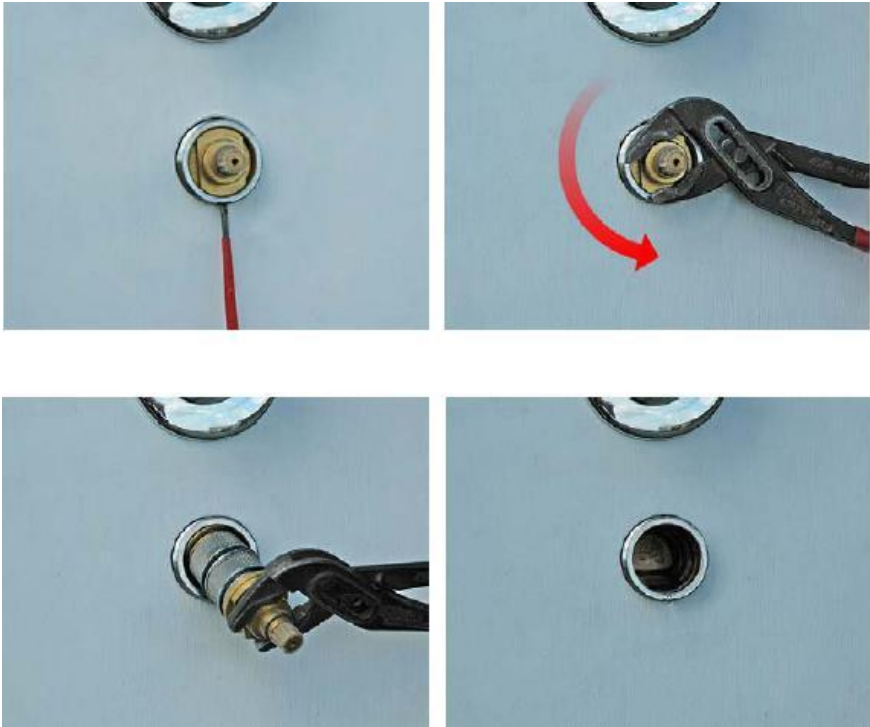
2. Remove the Plastic Temperature Safety Guard from the Brass Spline.



3. Unscrew chrome Temperature face plate as shown.



4. Remove the retaining grub screw, then using pipe grips as shown in photo, twist the thermostatic core left and right whilst pulling it from its housing. (it is held in position by a rubber washer so you will feel it pop out of position)



5. Refitting the new thermostatic is a reversal of the above.

Addition 2.

Instructions for replacement of diverter core

**BEFORE STARTING ENSURE THAT THE WATER & ELECTRICAL SUPPLIES
ARE DISCONNECTED**

1. Remove the Diverter selector and temperature control knobs.
2. Unscrew the chrome temperature control plate from valve body.
3. Unscrew the chrome lock nut that secures the chrome diverter selector plate.

- The entire valve body will now pass through the aluminum control panel to the rear of the shower.
- Using pipe grips as shown in photo, unscrew the diverter housing from the main valve body.



- Remove the old diverter core and refit the new one ensuring that the locating pins on the diverter core are aligned with the corresponding holes within the valve body.



7. Replace the diverter housing and tighten using pipe grips. It is recommended that some PTFE tape is used on the thread of the housing before refitting/
8. Refit the valve to the control panel.
9. Refitting is the reversal of the removal.

E & OE