

Massage Bathtub

Instructions of Installation and Use



Dear Customer,
Thank you for choosing our product. For your safe concern, please take a few minutes to read this manual before installation and use.

WARNING

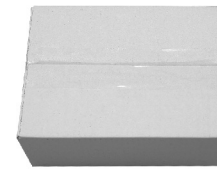
1. For a person who has heart trouble, high blood pressure & sugar diabetes should not take a steam shower or bath when feeling sick. (The kid is suggested to be accompanied by an adult when taking a bath)
2. Don't take a bath alone after drinking wine with alcohol or excess sports.
3. The water temperature should be below 45°C during shower and the recommended temperature is 30°C-38°C.
4. Don't take a bath for a long time. Recommended time: 15-21minutes.
5. All the information in this instruction are subject to change without prior notice.
6. Settings, configurations and details of the products are subject to be changed or upgraded without prior notice.
7. For the maintenance, please contact the technicians appointed by the dealer and don't disassemble and fix by yourself, or the supplier will be free from any consequences that may occur.

CONTENTS:

Preparations	Page 2
Installation Process	Page 4
Instruction of Using Our Products	Page 7



Please make sure all accessories are in the package
(Bathtub 1set Accessory box 1pc Pillow 1pc)



Accessory box:
Hand Shower 1pc
Drain cover 1pc
Hand Shower Hose 1pc



Installation Tools:(no included)



Thread sealing tape



Open spanner



Adjustable spanner



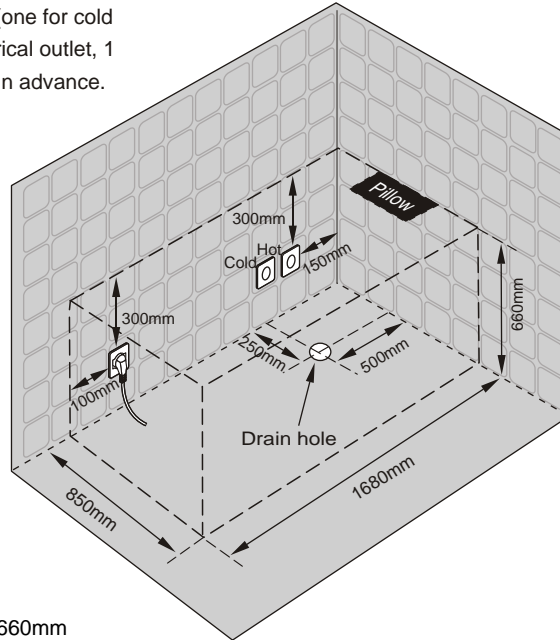
Thread sealing tape



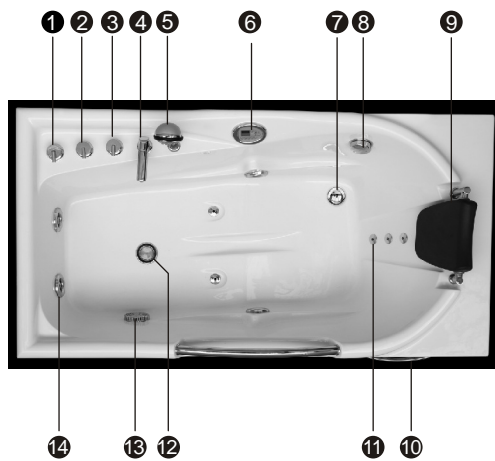
Gradient

Preparations

Install 2 water supply holes (one for cold and another for hot), 1 electrical outlet, 1 drain hole (diameter $\geq 5\text{cm}$) in advance. Do as the pic. shows:



SIZE: 1680mm X 850mm X 660mm



- ① Hot Water Handle
- ② Cold Water Handle
- ③ Switch Handle
- ④ Faucet
- ⑤ Hand Shower
- ⑥ Control Panel
- ⑦ Drainer
- ⑧ Drainer Switch
- ⑨ Pillow
- ⑩ Towel Rack
- ⑪ Small Jets
- ⑫ Light
- ⑬ Water Circulation
- ⑭ Big Water Jets

Installation Process



1. Open the accessory box as pic. shows



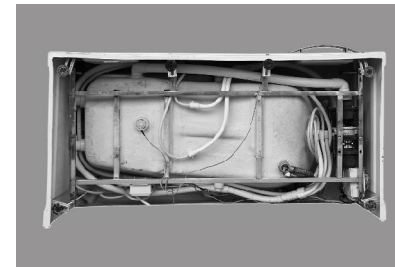
2. Connect the hand shower with the hose into the bathtub in right position as pic. Shows



3. Distinguish water inlet pipe



4. Screw it



5. Side up the bathtub, then install downcomer



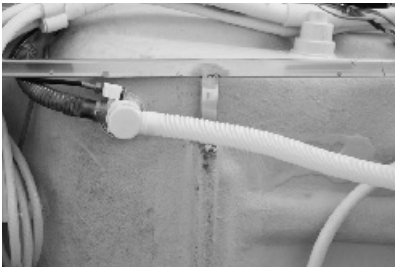
6. Use thread sealing tape to wrap around the drain hole



7. Make the thread sealing tape smooth



8. Fasten the drain tube



9. Put the drain pipe into the drain hole on the ground

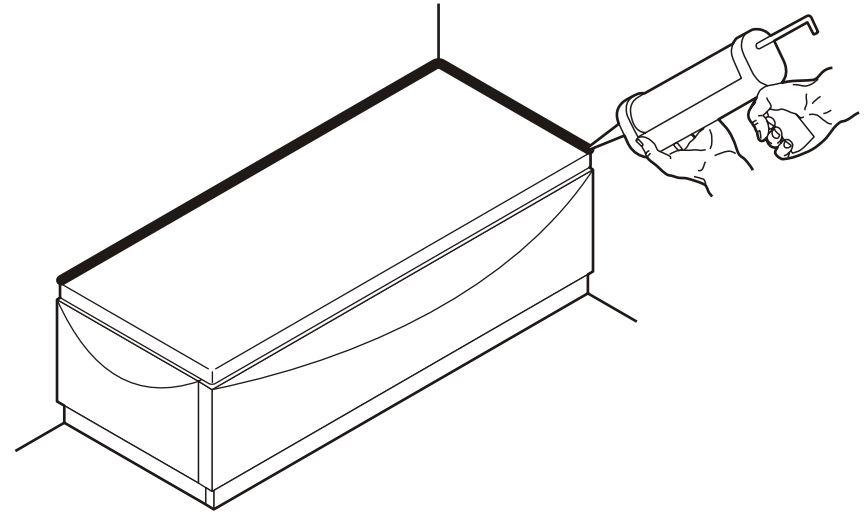


10. Drain sewage of the tube, then connect the cold and hot water pipe separately



11. Put the drain cover on

12. Seal the barhtub edge by silicon glue as follows(with skirt)

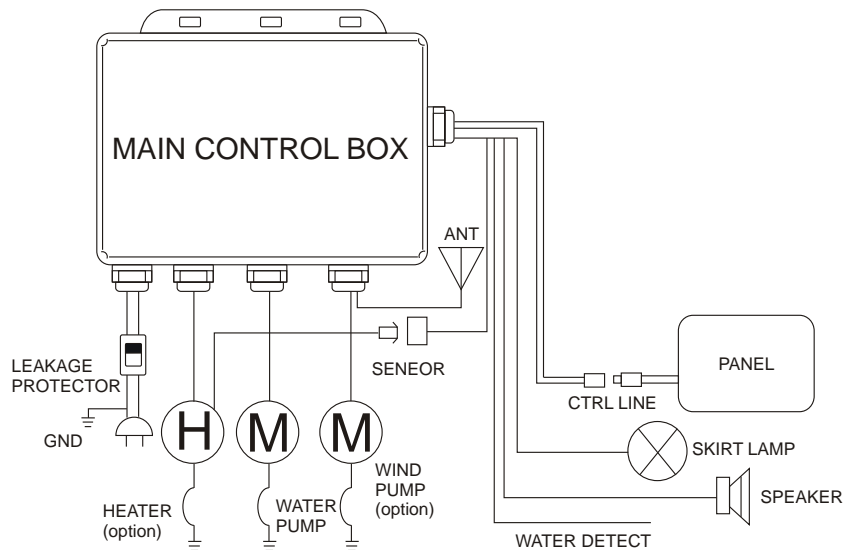


Waste water free piping system:

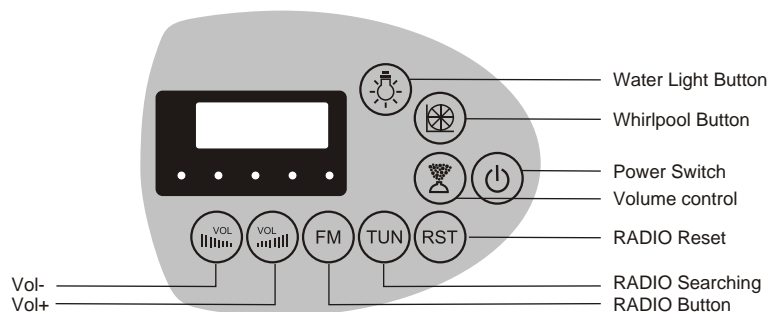


1. The creepage protector will automatically cut off the circuit if the current is too high.

SYSTEM INSTALLATION SKETCH



EXTERIOR DESCRIPTION: (CONTROL PANEL1)



RUN CONDITION

1. Power: AC110V/220V
2. Underwater Lamp: AC12V
3. Water Pump: AC110V/220V
4. Heater: AC110V/220V
5. Air Pump: AC110V/220V

OPERATION MANUAL

- A-1. Power
Press the power on, systems begin to work and get into the power safe mode, all the other functions open.
- A-2. FM(RADIO)
Press the FM button to open RADIO function.
Press the RST button until there's no station, then press TUN again to search stations from 87M to 108MHz, Press VOL+, VOL- to adjust volume higher and lower.
- A-3. Press button of underwater light to lighten the bathtub, press again to power off.
- B. Whirlpool bathtub operation
- B-1. Power on
- B-2. Adjust the hot/cold water faucet into a proper temperature, turn to switch water outlet between the faucet and the hand shower.
- B-3. Make sure the water level inside the bathtub higher than jets, then you can start the water pump.
- B-4. Adjust the massage pressure and power by Air-Driven Switch Valve.
- B-5. Hand shower is movable for adjustments of water outlet.
- B-6. Power off.

1. The installation should be carried out by a qualified technician and creepage protector should be installed in the place easily to be controlled.
2. The electronic parts should be well grounded, otherwise, the manufacturer will not be liable for any loss or consequences occurred.
3. The load capability of the power supply should be considered during installation, or it affects the normal operation of the product or may lead to accident!
4. For any functions can not be activated through the ways mentioned above, please contact a certified technicians or local dealer.
5. If you don't use the product for a long time, please disconnect the main power supply.
6. Parts containing live parts, except parts supplied with safety extra-low voltage not exceeding 12V, must be inaccessible to a person in the bath.
7. Earthed appliances must be permanently connected to fixed wiring.
8. Parts incorporating electrical components, except remote control devices, must be located or fixed so that they cannot fall into the bath.
9. The appliance should be supplied through a residual current device (RCD) having a rated residual operating current not exceeding 30mA.
10. Make sure that the wire is laid correctly.
11. Make sure that the equipotential connection is done correctly.
12. The means having a contact at least 3.0mm separation in all poles that provide full disconnection must be incorporated in the fixed wiring in accordance with the wiring rules.
13. If the supply cord is damaged, it must be replaced by the manufacturer, its service agent or similarly qualified persons in order to avoid a hazard.



Earthing Marking



Equipotential



Switch Marking

1. During the transportation or installation, do not pull the pipe or hold accessories to avoid the water leakage.
2. After long time use, if there are some dirt on product's surface, wipe it off gently by a soft towel stained with mild detergent; for the metal parts, polish it with some car wax by a towel, which brings out a refreshing appearance.
3. Scale deposit can be wiped off with warm citric acid or vinegar by a soft cloth.
4. Don't clean the tub and accessories with hard or coarse material to avoid any scratches.
5. Don't clean the tub and accessories with gasoline to avoid any damages.
6. It is not recommended to leave water in the tub for a long time or use this tub for washing purpose. Pls drain off the water after the bath and disconnect the power supply.
7. There should be sufficient power supply and wires should be safely grounded.
8. For your safety, a professional technician is necessary to ensure earthing wire be well grounded and a RCCB fitted during installation.