

# Massage Bathtub

## Instructions of Installation and Use

### Cleaning&Maintenance

1. During the transportation or installation, do not pull the pipe or hold accessories to avoid the water leakage.
2. After long time use, if there are some dirt on product's surface, wipe it off gently by a soft towel stained with mild detergent; for the metal parts, polish it with some car wax by a towel, which brings out a refreshing appearance.
3. Scale deposit can be wiped off with warm citric acid or vinegar by a soft cloth.
4. Don't clean the tub and accessories with hard or coarse material to avoid any scratches.
5. Don't clean the tub and accessories with gasoline to avoid any damages.
6. It is not recommended to leave water in the tub for a long time or use this tub for washing purpose. Pls drain off the water after the bath and disconnect the power supply.
7. There should be sufficient power supply and wires should be safely grounded.
8. For your safty, a professional technician is necessary to ensure earthing wire be well grounded and a RCCB fitted during installation.



TLP-632

# Preparations

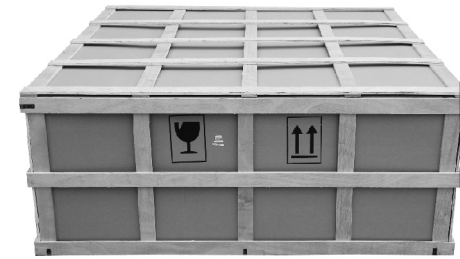
Dear Customer,  
Thank you for choosing our product. For your safe concern, please take a few minutes to read this manual before installation and use.

## WARNING

1. For a person who has heart trouble, high blood pressure & sugar diabetes should not take a steam shower or bath when feeling sick. (The kid is suggested to be accompanied by an adult when taking a bath)
2. Don't take a bath alone after drinking wine with alcohol or excess sports.
3. The water temperature should be below 45°C during shower and the recommended temperature is 30°C-38°C.
4. Don't take a bath for a long time. Recommended time: 15-21minutes.
5. All the information in this instruction are subject to change without prior notice.
6. Settings, configurations and details of the products are subject to be changed or upgraded without prior notice.
7. For the maintenance, please contact the technicians appointed by the dealer and don't disassemble and fix by yourself, or the supplier will be free from any consequences that may occur.

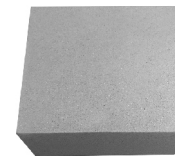
## CONTENTS:

Preparations	Page2
Installation Process	Page4
Instruction of Using Our Products	Page9

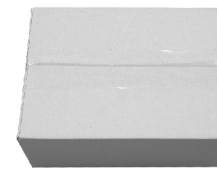


Please make sure all accessories are in the package  
(Bathtub 1set Accessory box 2pcs Pillow 2pcs)

Pillow



Accessory box 1:  
Faucet 1 pcs



Accessory box 2:  
Shower head 1pcs  
Drain cover 1pcs

## Installation Tools:(no included)



Tape measure



Open spanner



Adjustable spanner

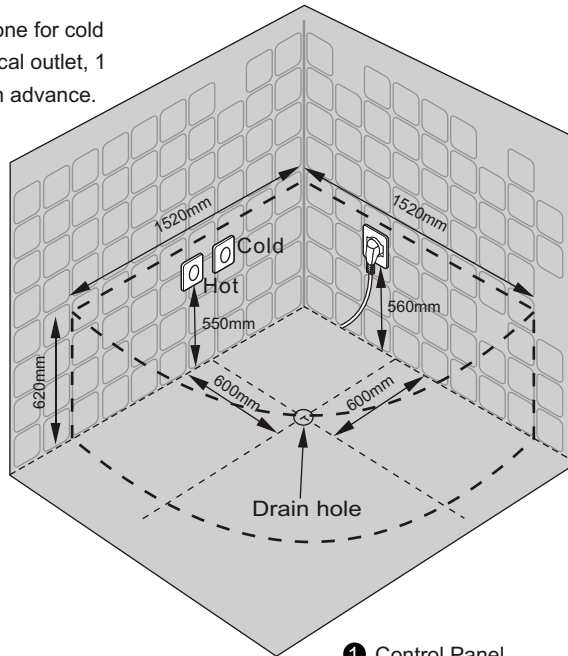


Thread sealing tape

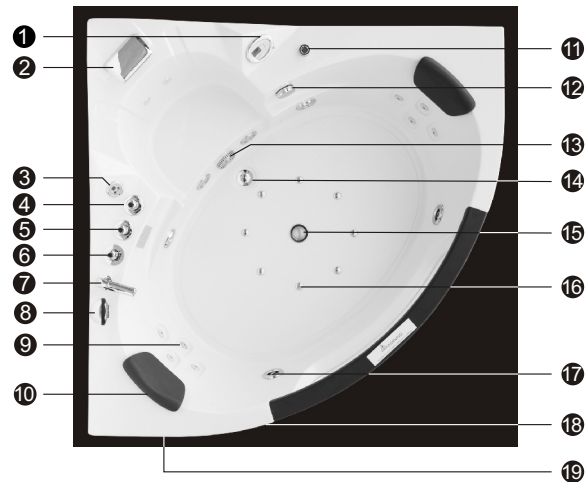


Gradient

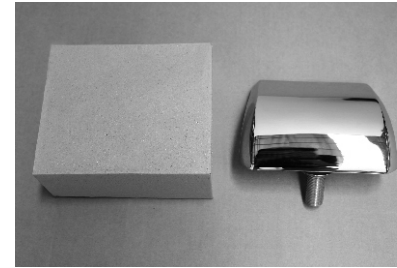
Install 2 water supply holes (one for cold and another for hot), 1 electrical outlet, 1 drain hole (diameter  $\geq 5\text{cm}$ ) in advance. Do as the pic. shows:



MODEL: MT-NR1501  
SIZE: 1520mmX1520mmX620mm



- ① Control Panel
- ② Faucet
- ③ Control Panel for Heater
- ④ Water Switch
- ⑤ Function Switch
- ⑥ Thermostatic Switch
- ⑦ Faucet
- ⑧ Shower Head
- ⑨ Small Jets
- ⑩ Pillow
- ⑪ Volume Control
- ⑫ Drainer Switch
- ⑬ Water Circulation
- ⑭ Drainer
- ⑮ Light
- ⑯ Air Jets
- ⑰ Big Water Jets
- ⑱ Speaker
- ⑲ Towel Rack



1. Open the accessory box 1 as pic. shows



2. Remove the screw of inlet faucet shows



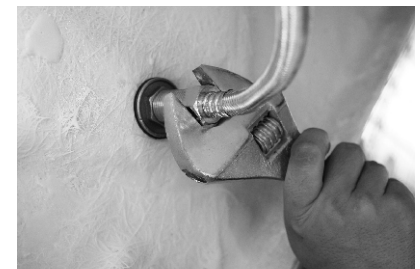
3. Put the inlet faucet into the hole of the bathtub



4. Put the rubber from below, and use spanner to screw it



5. Distinguish the water pipes of faucet



6. Use spanner to screw the tie in.



1. Open the accessory box 2 as pic. shows



2. Put the shower head into the bathtub in right position as pic. shows



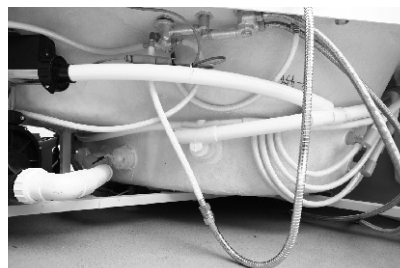
7. Make the thread sealing tape smooth



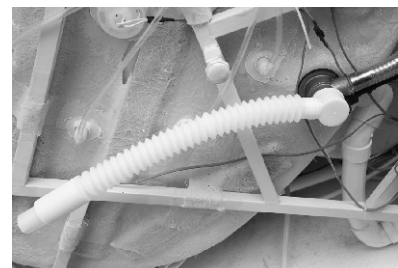
8. Fasten the drain tube



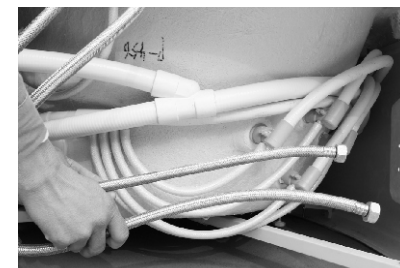
3. Distinguish water inlet pipe



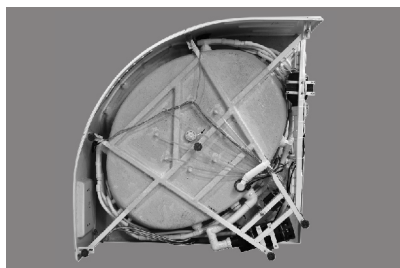
4. Screw it



9. Put downcomer into the drain hole on the ground



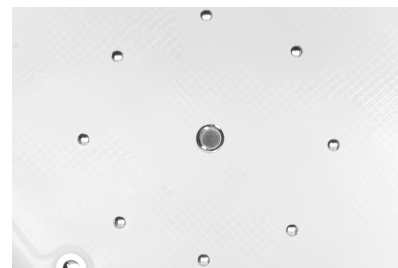
10. Drain sewage of the tube, then connect the cold and hot water pipe separately



5. Side up the bathtub, then install downcomer



6. Use thread sealing tape to wrap around the drain hole



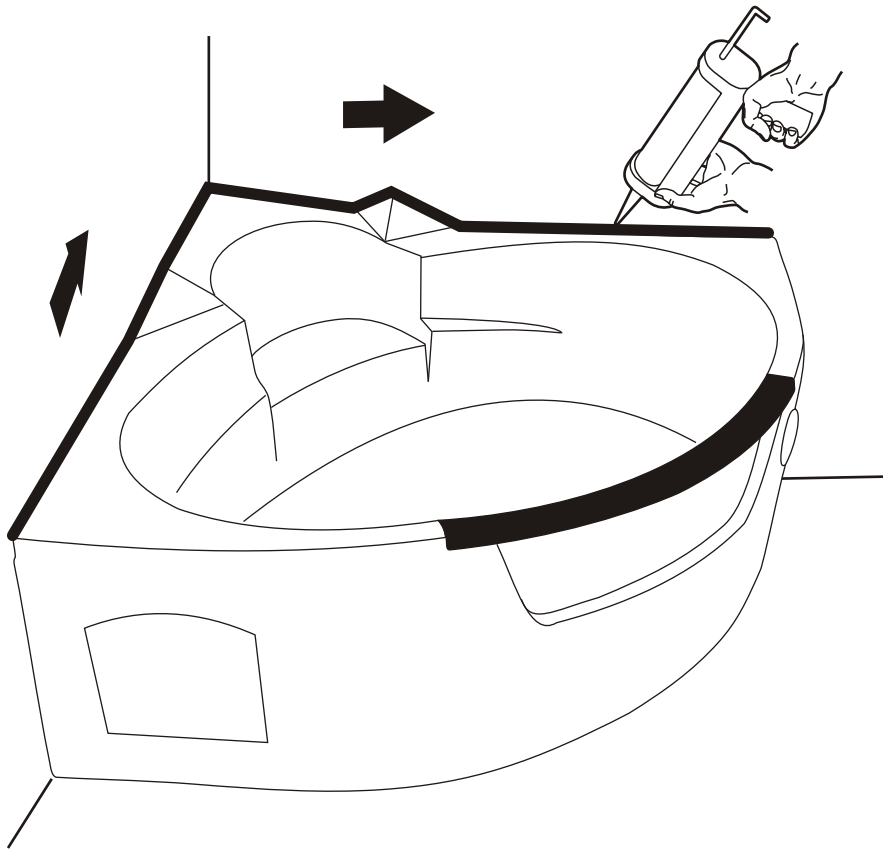
11. Put plugs into the drain hole



12. Install pillow



13. Seal the barhttub edge by silicon glue as follows



Unique Point:



1. The creepage protector will automatically cut off the circuit if the current is too high.



2. Volume control

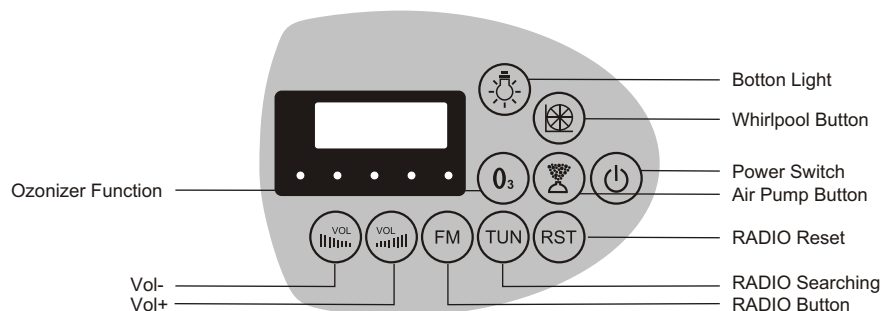


3. Waste water free piping system

## RUN CONDITION

1. Power: AC220V
2. Underwater Lamp: AC12V
3. Water Pump: AC220V
4. Heater: AC220V
5. Air Pump: AC220V

## EXTERIOR DESCRIPTION: (CONTROL PANEL)



## OPERATION MANUAL

### A-1. Power

Press the power on, systems begin to work and get into the power safe mode, all the other functions open.

### A-2. FM(RADIO)

Press the FM button to open RADIO function.

Press the RST button until there's no station, then press TUN again to search stations from 87M to 108MHz, Press VOL+, VOL- to adjust volume higher and lower.

### A-3. Press button of underwater light to lighten the bathtub, press again to power off.

### B. Whirlpool bathtub operation

#### B-1. Power on

B-2. Open the faucets to adjust the water into a proper temperature, turn to switch water outlet between the faucet and the hand shower.

B-3. Make sure the water level inside the bathtub higher than jets, then you can start the water pump.

B-4. Adjust the massage pressure and power by Air-Driven Switch Valve.

B-5. Hand shower is movable for adjustments of water outlet.

B-6. When you finish using the bathtub, press the pump air-break switch to drain the water from the tub.

B-7. Power off.

## PRECAUTIONS

1. The installation should be carried out by a qualified technician and creepage protector should be installed in the place easily to be controlled.
2. The electronic parts should be well grounded, otherwise, the manufacturer will not be liable for any loss or consequences occurred.
3. The load capability of the power supply should be considered during installation, or it affects the normal operation of the product or may lead to accident!
4. For any functions can not be activated through the ways mentioned above, please contact a certified technicians or local dealer.
5. If you don't use the product for a long time, please disconnect the main power supply.